

JULIE'S PORTRAIT CREATIONS

ELEVATOR ADDITION AND INTERIOR RENOVATIONS
 MONROE AND EAST CLINTON STREET
 NAPOLEON, OHIO 43545

LIST OF DRAWINGS	
C-1	COVER SHEET, SITE PLAN
A-0	DEMOLITION PLAN
A-1	FLOOR PLANS
A-2	ENLARGED FLOOR PLANS
A-3	EXTERIOR ELEVATIONS, BUILDING SECTIONS, WALL SECTIONS
A-4	INTERIOR ELEVATIONS, CASEWORK DETAILS
A-5	DOOR SCHEDULE AND DETAILS, SIGNAGE ROOM FINISH SCHEDULES
S-1	FOUNDATION PLAN AND DETAILS
	FRAMING PLAN, SCHEDULES AND DETAILS
	FRAMING DETAILS
P-1	PLUMBING PLAN, PLUMBING ISOMETRIC AND DETAILS
M-1	HVAC PLAN, SCHEDULES
E-1	POWER PLAN, PANEL DIAGRAM
E-2	LIGHTING PLAN

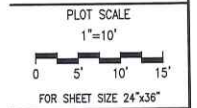
FIRE PROTECTION SYSTEMS
 AUTOMATIC SPRINKLER SYSTEM SHALL BE PROVIDED THROUGHOUT
 FIRE ALARM AND DETECTION SYSTEM SHALL BE PROVIDED THROUGHOUT
 SMOKE ALARMS SHALL BE PROVIDED AND MAINTAINED IN GROUP R-3

BUILDING CODE REQUIREMENTS	
Building Code	2007 OBC 1991 ADAAG
Use Group	Non-separated mixed use A2 Banquet Hall A3 Art Gallery B Studio/Office R3 Apartment S1 Storage
Construction Type	IIIB
Allowable Floor Area (Fully sprinklered)	
Basic Area	9,500 SF
Street Frontage Increase (75%)	4,750 SF
Sprinkler Increase (300%)	23,500 SF
Total Allowable Area	42,750 SF
Building Area	
First Floor Area (Renov)	6,417 SF
First Floor Addition	145 SF
Second Floor Area (Renov)	6,417 SF
Second Floor Addition	145 SF
Mezzanine (Renov)	1,811 SF
Total Floor Area	14,735 SF
Maximum Occupant Load	
First Floor	119
Second Floor	326
Mezzanine	10
Total Occupant Load	455

STRUCTURAL DESIGN CRITERIA	
Soil Bearing Capacity	2500 psf
Concrete Strength (fc)	3500 psi
Occupancy Category	II
Exposure Category	B
Floor Live Load, non-reduced	
Uniform Live Load	100 psf
Concentrated Load	300 lbs
Floor Dead Load	50 psf
Total Floor Load	150 psf
Roof Live Load	30 psf
Roof Snow Load	
Ground Snow Load	20 psf
Snow Exposure Factor	0.9
Snow Importance Factor	1.1
Thermal Factor	1.0
Flat Roof Snow Load	19.8 psf
Roof Dead Load	25 psf
Total Roof Load	55 psf
Wind Loads	
Basic Wind Speed (3-Second gust)	90 mph
Wind Importance Factor	1.15
Internal Pressure Coefficient	+0.18 -0.18
Component/Cladding Pressure	
Roof	+10.0 -14.6 psf
Wall	+14.0 -19.5 psf
Roof Overhang	-21.0 psf
Earthquake Design Data	
Seismic Importance Factor	1.25
Spectral Response Acceleration S _s	0.20
Spectral Response Acceleration S ₁	0.06
Site Class	D
Spectral Response Coefficient S _{DS}	0.21
Spectral Response Coefficient S _{D1}	0.10
Seismic Design Category	B
Basic Seismic Force Resisting System	
Bearing Wall System	
Response Modification Factor R	2.0
Seismic Response Coefficient C _s	0.13
Effective Seismic Weight	75 kips
Design Base Shear	10 kips
Analysis Procedure: Equivalent Lateral Force Procedure	



B | A
BEILHARZ
 ARCHITECTS
 INCORPORATED



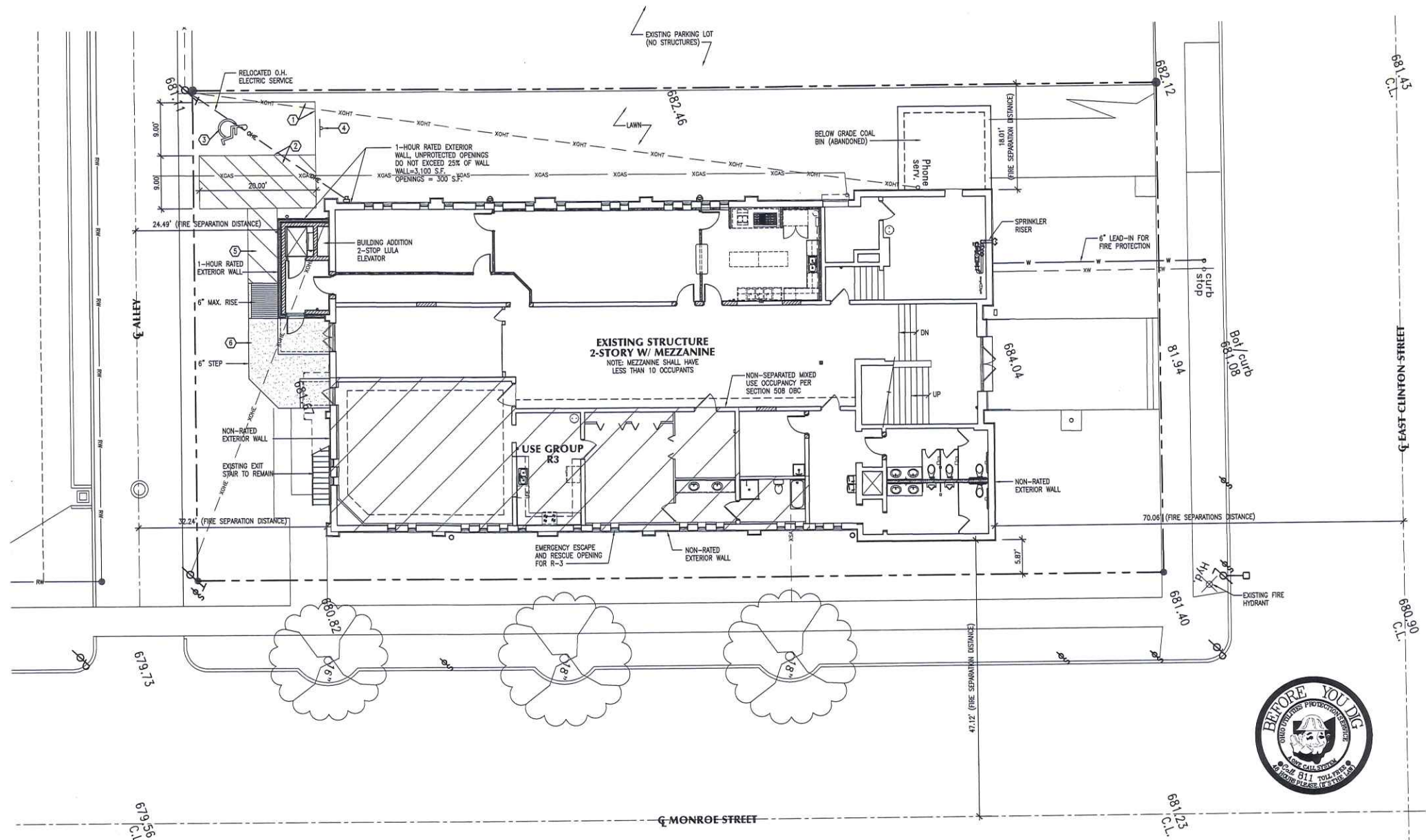
ISSUE DATE	
1	10-26-2011
PRELIMINARY	
2	11-18-2011
CORRECTION LETTER	

© 2011 BEILHARZ ARCHITECTS, INC.
 THE CONTENT OF THIS DRAWING IS NOT INTENDED TO BE SUITABLE FOR USE OR REUSE BY INDIVIDUALS, COMPANIES, CORPORATIONS, OR OTHER ENTITIES FOR ANY PURPOSE OTHER THAN THE ORIGINAL PURPOSE OF THIS DOCUMENT. USE FOR USE ON ANY OTHER PROJECT, ANY REUSE OR REPRODUCTION WITHOUT WRITTEN PERMISSION AND ADAPTATION BY THE ARCHITECT FOR THE SPECIFIC PURPOSES AND WITHOUT LIABILITY OR LEGAL EXPOSURE TO THE ARCHITECT.

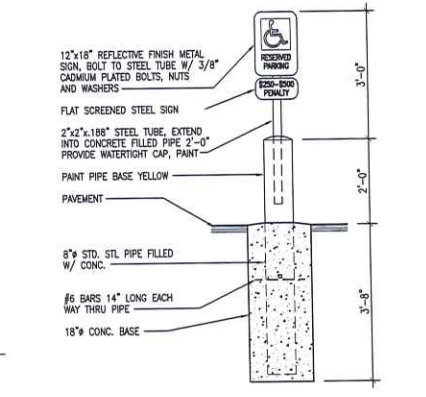
JULIE'S PORTRAIT CREATIONS
 ELEVATOR ADDITION AND INTERIOR RENOVATIONS
 127 EAST CLINTON STREET
 NAPOLEON, OHIO 43545

701-1/2 WEST FIRST STREET • DEFIANCE • OHIO • 43512 • PHONE • 419-782-6211 • FAX • 419-782-8722 • architects@beilharzinc.com

SITE PLAN
 PROJECT: B1-4356
 DRAWN BY: JM
 CHECKED BY: JSO
 SHEET
C-1
 1 OF 12



- KEYNOTE LEGEND**
- ① 4" WIDE LINE, PARKING LINES PAINT WHITE.
 - ② 4" WIDE LINE AT PERIMETER AND DIAGONAL (36" O.C.), PAINT WHITE
 - ③ INTERNATIONAL ACCESSIBLE SYMBOL, PAINT 4" BORDER AND SYMBOL BLUE ON WHITE BACKGROUND
 - ④ ACCESSIBLE PARKING SIGNAGE, SEE DETAIL 1/C-1
 - ⑤ ADAAG COMPLIANT ACCESSIBLE ROUTE
 - ⑥ CONCRETE WALK



SITE PLAN
 SCALE: 1"=10'

ACCESSIBLE PARKING SIGNAGE
 SCALE: 1/2"=1'-0"

SCANNED
 11/26/14

P-KH-11-0192

EXTERIOR EXIT STAIRWAY

EXTERIOR EXIT STAIRWAY NOT REQUIRED TO BE SEPARATED FROM THE INTERIOR OF THE BUILDING IN COMPLIANCE WITH EXCEPTIONS NO. 1 AND NO. 3, SECTION 1023.5 OBC

- BUILDING IS NO MORE THAN 2-STORIES ABOVE GRADE
- BUILDING IS PERMITTED TO HAVE UNENCLOSED INTERIOR STAIRWAYS IN ACCORDANCE WITH SECTION 1020.1 OBC

MEZZANINE NOTES

- THE AGGREGATE AREA DOES NOT EXCEED ONE-THIRD OF THE FLOOR AREA OF THE BANQUET HALL/STUDIO
- THE OCCUPANT LOAD OF THE ENCLOSED MEZZANINE DOES NOT EXCEED 10

GENERAL NOTES

- DIMENSIONS SHOWN ARE TO FACE OF FRAMING, FACE OF MASONRY, OR COLUMN CENTERLINE, U.N.O.
- VERIFY LOCATION OF ALL UTILITY LINES PRIOR TO BEGINNING WORK.
- ALL CONTRACTORS SHALL COORDINATE WORK WITH EACH OTHER IN ORDER TO AVOID CONFLICTS BETWEEN TRADES.
- COMBUSTIBLE MATERIALS SHALL BE PERMITTED FOR USE AS BLOCKING FOR HANDRAILS, MILLWORK, CABINETS, WINDOW FRAMES AND DOOR FRAMES.
- WHERE GYPSUM BOARD WALL ABUTS MASONRY, HOLLOW METAL OR ALUMINUM, TERMINATE WITH TEARAWAY "L" BEAD AND CONTINUOUS SEALANT.
- ALL NEW INTERIOR PARTITIONS SHALL BE 5/8" GYPSUM BOARD ON EACH SIDE OF 2x4 WOOD STUDS AT 16" O.C. TO
- COORDINATE ALL WORK WITH OWNER
- PROVIDE ALL WORK IN ACCORDANCE WITH OHIO BUILDING CODE (OBC)

PLUMBING FACILITY REQUIREMENTS

Group	Occ.	Water closets		Urinals		Lavatories		Drinking Fountain	Bath or Shower		Service Sink					
		Male	Female	Male	Female	Male	Female		Male/Female							
A-2	323	162	1/75	2.16	1/75	2.16	1.44	0.71	1/200	0.81	0.81	1/500	0.65	0	0	1
A-3	102	51	1/125	0.41	1/65	0.79	0.27	0.13	1/200	0.26	0.26	1/500	0.20	0	0	0
B	14	7	1/50	0.14	1/50	0.14	0.10	0.05	1/80	0.09	0.09	1/100	0.14	0	0	0
S-1	6	3	1/100	0.03	1/100	0.03	-	-	1/100	0.03	0.03	-	-	-	-	-
R-3	8	4	1 PER DWELLING		1 PER DWELLING		1 PER DWELLING		1/100	0.08	1 PER DWELLING	1 PER DWELLING		0	0	0
Totals	454	227	3		3		2	1	1	1	1	1	1	0	1	1

ROOM OCCUPANCY SCHEDULE

ROOM	USE	NET AREA	SF PER OCC	OCCUPANTS	EGRESS	POSTED	HWHR	PANIC
001	Foyer	-	-	-	-	-	-	-
002	Gallery	A-3	1011	15	67	67	-	X
003	Storage	S-1	342	300	1	-	-	-
004	Hallway	-	-	-	-	-	-	-
005	Lobby	-	-	-	-	-	-	-
006	Storage	S-1	289	300	1	-	-	-
007	Conference	A-3	520	15	35	35	-	-
008	Kitchen	-	314	200	2	-	-	-
009	Mechanical	-	-	-	-	-	-	-
009a	Storage	S-1	1239	300	4	-	-	-
010	Women	-	-	-	-	-	-	-
011	Alcove	-	-	-	-	-	-	-
012	Men	-	-	-	-	-	-	-
013	Alcove	-	-	-	-	-	-	-
014	Lobby	-	-	-	-	-	-	-
015	Janitor	B	124	100	1	-	-	-
016	Shower	-	-	-	-	-	-	-
017	Utility	-	-	-	-	-	-	-
018	Vanity	-	-	-	-	-	-	-
019	Bedroom	-	-	-	-	-	-	-
020	Kitchen	-	-	-	-	-	-	-
021	Living Room	R-3	1557	200	8	-	-	-
First Floor Total						119		
101	Lobby	-	-	-	-	-	-	-
102	Banquet Hall	A-2	4851	15	323	323	-	X
103	Storage	-	-	-	-	-	-	-
104	Office	B	309	100	3	-	-	-
105	Toilet	-	-	-	-	-	-	-
106	Alcove	-	-	-	-	-	-	-
107	Alcove	-	-	-	-	-	-	-
108	Changing Room	-	-	-	-	-	-	-
109	ADA Toilet	-	-	-	-	-	-	-
110	Wet Bar	-	-	-	-	-	-	-
Second Floor Total						326		
201	Balcony	-	-	-	-	-	-	-
202	Storage	-	-	-	-	-	-	-
203	Office	B	309	100	3	-	-	-
204	Alcove	-	-	-	-	-	-	-
205	Office	B	361	100	4	-	-	-
206	Alcove	-	-	-	-	-	-	-
207	Alcove	-	-	-	-	-	-	-
208	Office	B	316	100	3	-	-	-
209	Toilet	-	-	-	-	-	-	-
Mezzanine Total						10		
Building Total						455		

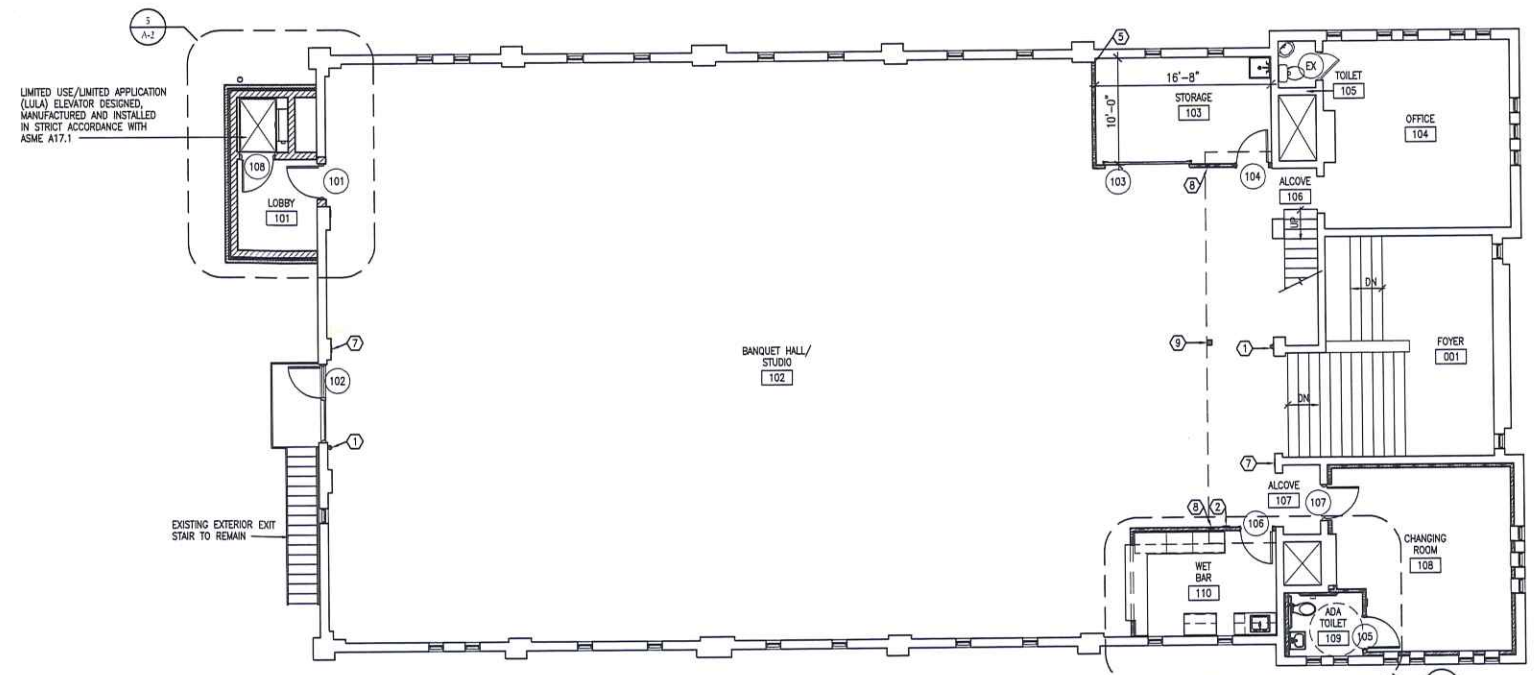
* Indicates accessory to main building use
X indicates egress doors equipped with approved panic hardware

KEYNOTE LEGEND

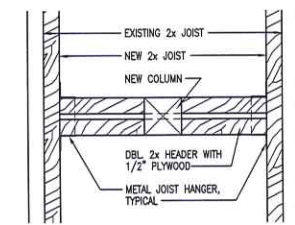
- WALL BRACKET MOUNTED ABC FIRE EXTINGUISHER WITH SIGN, USE "X" CLASS EXTINGUISHER IN KITCHEN, SEE SIGNAGE TYPE F, SHEET A-5
- POSTED OCCUPANCY SIGN, REFER TO SIGNAGE TYPE A, SHEET A-5.
- SIGN, TYPE B, SHEET A-5.
- INFILL OPENING; MATCH MATERIAL, THICKNESS AND FINISHES
- ALIGN NEW WALL WITH EDGE OF MASONRY, TERMINATE GYP. BOARD WITH TEARAWAY "L" BEAD
- EXISTING ACCESSIBLE THRESHOLD
- SIGN, TYPE G, SHEET A-5.
- 4x4 WOOD COLUMN IN NEW STUD WALL FOR BALCONY SUPPORT, ATTACH TO EXISTING BALCONY FRAMING AND FLOOR FRAMING AS NECESSARY; SEE DETAIL 1/A-1
- 6x6 WOOD COLUMN FOR BALCONY SUPPORT, ATTACH TO EXISTING BALCONY FRAMING AND FIRST FLOOR CONCRETE SLAB AS NECESSARY
- PROVIDE WINDOW EMERGENCY ESCAPE AND RESCUE OPENING WITH A MINIMUM NET CLEAR OPENING OF 5.7 S.F., NET CLEAR HEIGHT OF 24 INCHES, NET CLEAR WIDTH OF 20 INCHES AND BOTTOM OF THE NET CLEAR OPENING AT 44 INCHES MAX A.F.F.
- 42" MIN. HEIGHT GUARD, OPEN GUARDS SHALL HAVE BALUSTERS OR ORNAMENTAL PATTERNS SUCH THAT A 4 INCH DIAMETER SPHERE CANNOT PASS THROUGH ANY OPENING
- PLATFORM FOR MECHANICAL EQUIPMENT, VERIFY SIZE WITH M.C.
- MASONRY LINTEL, SEE DETAIL 7/S-1

SYMBOLS LEGEND

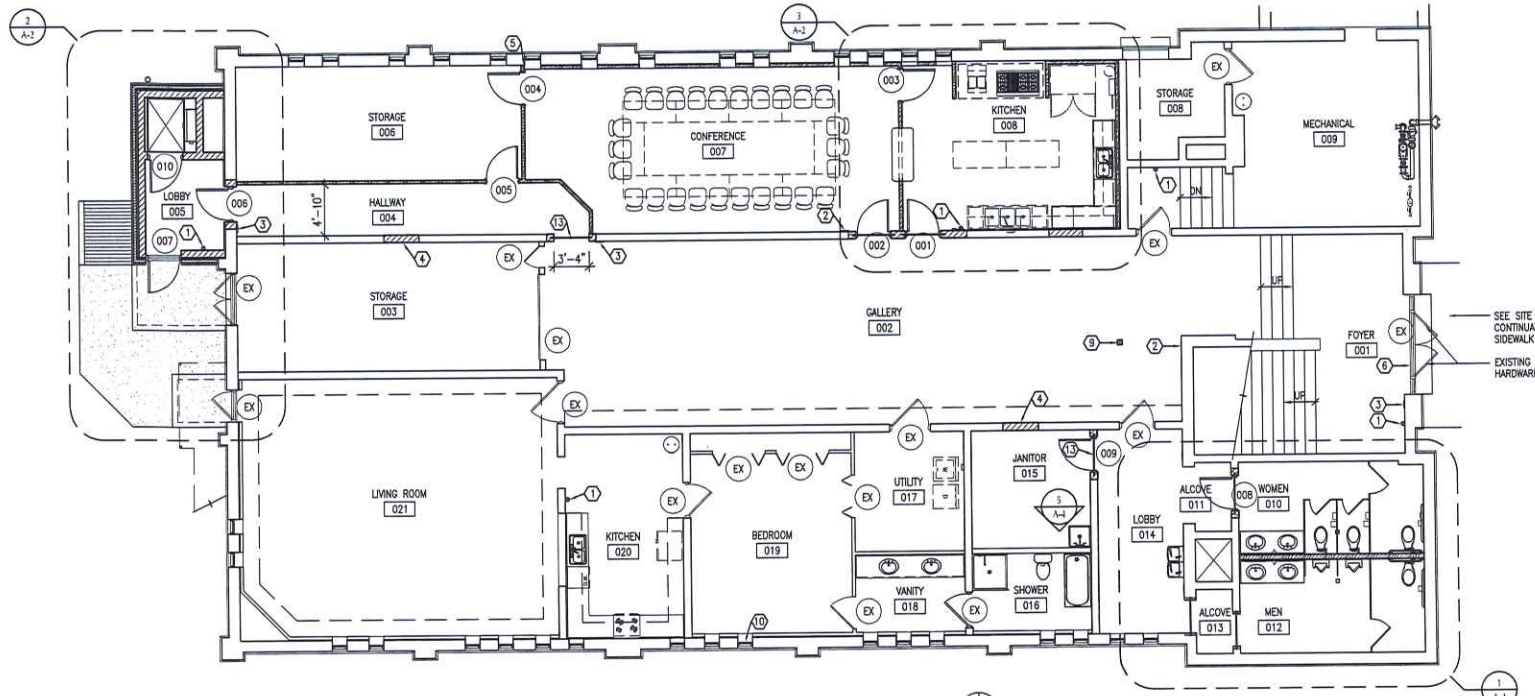
- EXISTING WALLS TO REMAIN
- CONCRETE MASONRY UNITS, CMU
- WOOD FRAMING/FURRING



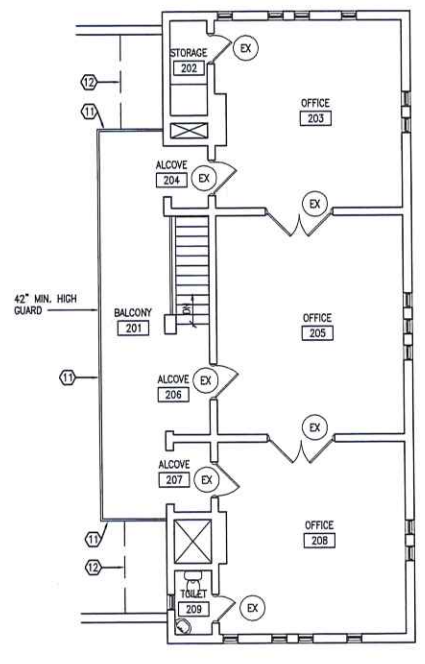
SECOND FLOOR PLAN
SCALE: 1/8"=1'-0"



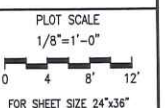
COLUMN SUPPORT
SCALE: 1/2"=1'-0"



FIRST FLOOR PLAN
SCALE: 1/8"=1'-0"



MEZZANINE PLAN
SCALE: 1/8"=1'-0"



ISSUE DATE

1	10-26-2011
2	11-18-2011

© 2011 BEILHARZ ARCHITECTS, INC. THE CONTENT OF THIS DRAWING IS NOT INTENDED TO BE SUITABLE FOR USE OR REUSE BY INDIVIDUALS, COMPANIES, CORPORATIONS, OR OTHER ENTITIES FOR ANY PURPOSE OTHER THAN THE INTENDED PURPOSE OF THIS DOCUMENT, NOR FOR USE ON ANY OTHER PROJECT. ANY REUSE OR REPRODUCTION WITHOUT WRITTEN VERIFICATION AND APPROVAL BY THE ARCHITECT FOR THE SPECIFIC PURPOSE INTENDED SHALL BE AT THE USER'S SOLE RISK AND WITHOUT LIABILITY OR LEGAL EXPOSURE TO THE ARCHITECT

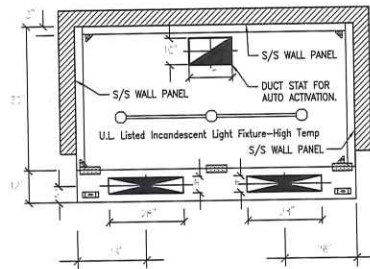
JULIE'S PORTRAIT CREATIONS
ELEVATOR ADDITION AND INTERIOR RENOVATIONS
127 EAST CLINTON STREET
NAPOLEON, OHIO 43545

FLOOR PLANS

PROJECT: B1-4356
DRAWN BY: JM
CHECKED BY: JSO

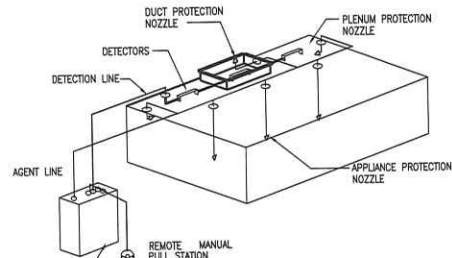
A-1

701-1/2 WEST FIRST STREET • DEFIANCE • OHIO • 43512 • PHONE • 419 • 782 • 6211 • FAX • 419 • 782 • 8722 • architects@beilharzinc.com



KITCHEN HOOD DETAIL
SCALE: NONE

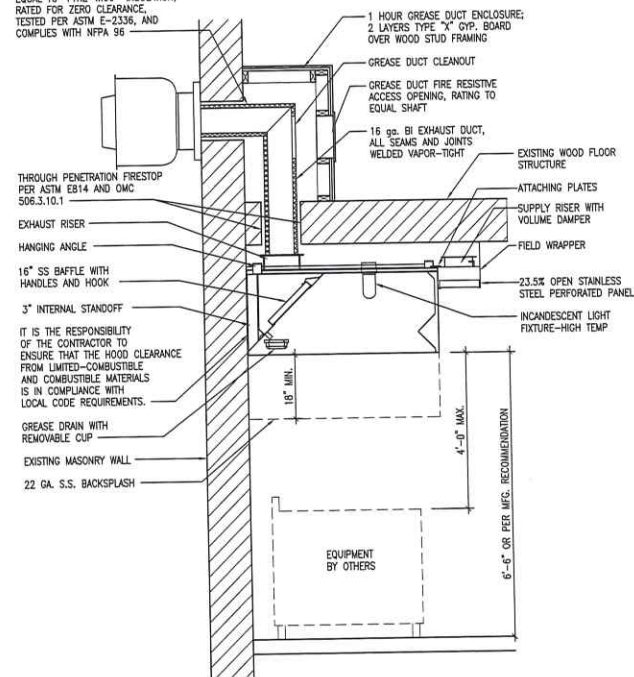
HOOD TO ACTIVATE AUTOMATICALLY UPON ACTIVATION OF COOKING EQUIPMENT AS REQUIRED PER M.M.C. 2006. THIS TO BE ACHIEVED VIA NORMALLY OPEN DUCT-STAT THAT CLOSSES UPON TEMPERATURE RISE, MOUNTED IN EXHAUST COLLAR(S)



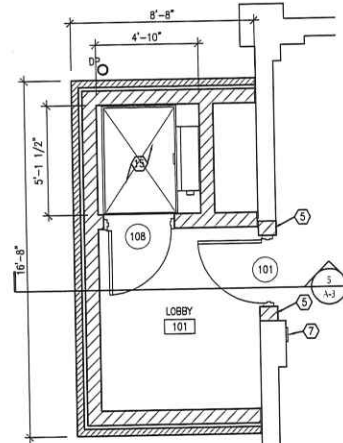
FIRE SUPPRESSION DETAIL
SCALE: NONE

SYSTEM CONTROL AUTOMAN WITH AGENT TANK ENCLOSED

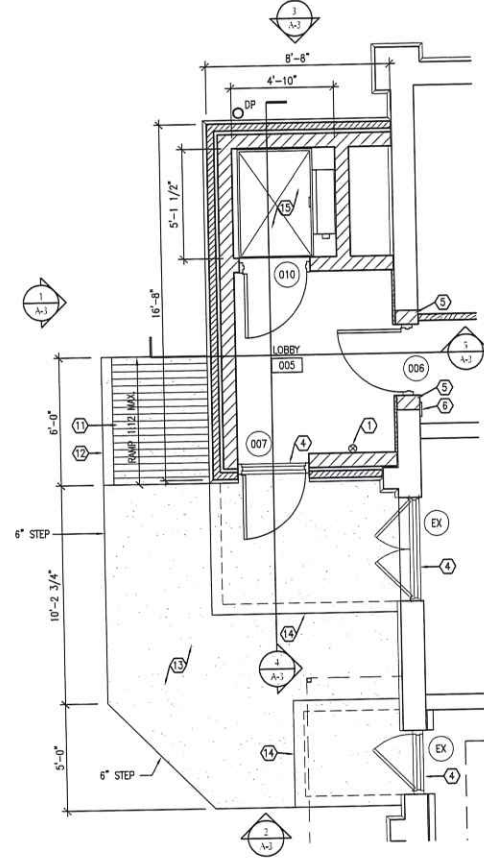
UL LISTED FIRE BLANKET WRAP EQUAL TO "TYRE-WRAP" INSULATION, RATED FOR ZERO CLEARANCE, TESTED PER ASTM E-2336, AND COMPLIES WITH NFPA 96



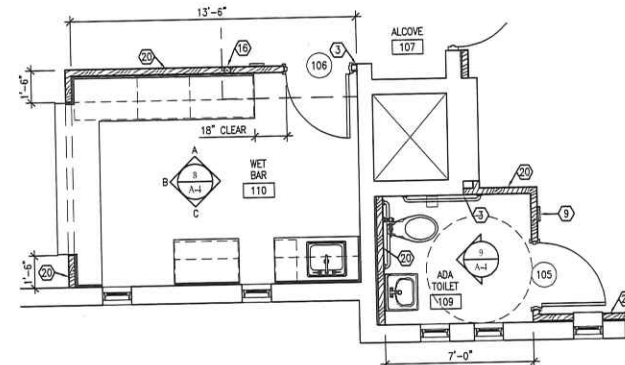
HOOD SECTION
SCALE: NONE



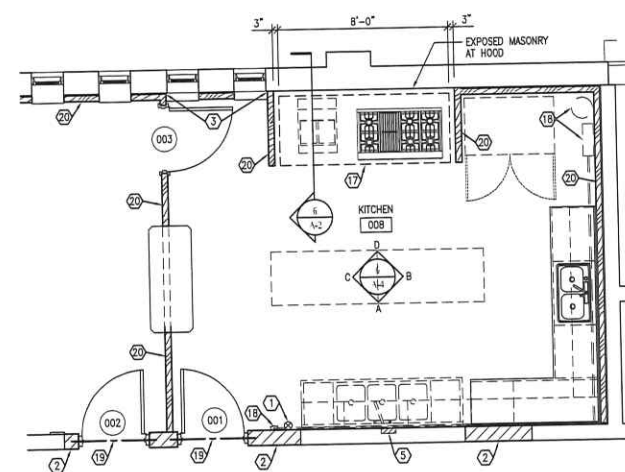
ENLARGED FLOOR PLAN
SCALE: 1/4"=1'-0"



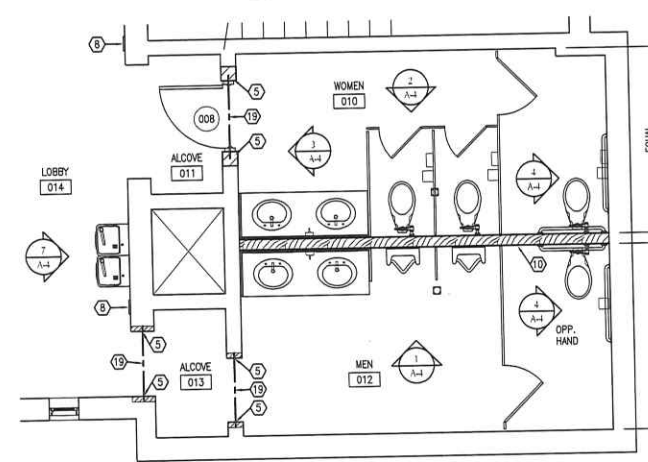
ENLARGED FLOOR PLAN
SCALE: 1/4"=1'-0"



ENLARGED FLOOR PLAN
SCALE: 1/4"=1'-0"



ENLARGED FLOOR PLAN
SCALE: 1/4"=1'-0"



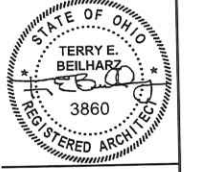
ENLARGED FLOOR PLAN
SCALE: 1/4"=1'-0"

KEYNOTE LEGEND

- 1 WALL BRACKET MOUNTED ABC FIRE EXTINGUISHER WITH SIGN, USE "K" CLASS EXTINGUISHER IN KITCHEN, SEE SIGNAGE TYPE F, SHEET A-5
- 2 INFILL OPENING, MATCH ADJACENT MATERIAL, THICKNESS AND FINISHES
- 3 ALIGN NEW WALL WITH EDGE OF MASONRY, TERMINATE GYP. BOARD WITH TEARAWAY "L" BEAD
- 4 ACCESSIBLE THRESHOLD; SET IN SOLID BED OF SEALANT
- 5 PATCH WALL DISTURBED BY DEMOLITION; FINISH FLUSH WITH ADJACENT SURFACES
- 6 SIGN, TYPE B, SHEET A-5.
- 7 SIGN, TYPE C, SHEET A-5.
- 8 SIGN, TYPE D, SHEET A-5.
- 9 SIGN, TYPE E, SHEET A-5.
- 10 5/8" GYPSUM BOARD OVER 2x6 WOOD STUDS AT 16"
- 11 CONSTRUCT ADAAG COMPLIANT RAMP:
 - a. CLEAR WIDTH: 36" (MIN.)
 - b. LANDING = 60"x60" (MIN.)
 - c. SLOPE AND RISE: 1:12 (MAX.), 6" (MAX.)
- 12 6" HIGH CONCRETE CURB
- 13 CONCRETE SIDEWALK, 4" THICK MIN.
- 14 CONCRETE AIR SLAB, SEE DIMENSIONS ON SHEET S-1
- 15 LULA ELEVATOR, VERIFY EXACT SIZE FOR SHAFT WITH MANUFACTURER
- 16 4x4 WOOD COLUMN IN NEW STUD WALL FOR BALCONY SUPPORT, ATTACH TO EXISTING BALCONY FRAMING AND FLOOR FRAMING AS NECESSARY; SEE DETAIL 1/A-1
- 17 RANGE HOOD BY H.C.; REFER TO MECHANICAL AND DETAIL 6/A-2
- 18 RANGE HOOD SUPPRESSION SYSTEM BY H.C.; REFER TO MECHANICAL AND DETAIL 6/A-2
- 19 MASONRY UNTEL; SEE DETAIL 7/S-1
- 20 5/8" GYP. BOARD OVER 2x4 WOOD STUDS AT 16" O.C.

LIMITED USE/LIMITED APPLICATION ELEVATOR NOTES

1. 42" X 60" MINIMUM PLATFORM WITH 42" MIN SIDE ENCLOSURES; 750 LBS RATED, PROVIDE PLATE
2. PROVIDE ALL POWER AND INTERCONNECTION BETWEEN CONTROLS AND DOORS/GATES
3. LULA ELEVATOR SHALL BE DESIGNED, MANUFACTURED AND INSTALLED IN STRICT ACCORDANCE WITH ASME A17.1, LATEST EDITION
4. PIT REFUGE AREA SHALL CONFORM WITH ASME A17.1 ITEM 5.2.1.4
5. PROVIDE DRAIN OR SUMP PUMP; SUMP PUMP SHALL HAVE COVER AND SHALL DISCHARGE FLUID FROM THE PIT TO THE BUILDING EXTERIOR; RECEPTACLE SHALL CONFORM WITH NFPA 70 620-85
6. ALL ELECTRICAL CONDUIT SHALL BE ENCLOSED IN NEMA-4 AND WIRING SHALL BE IDENTIFIED FOR USE IN WET LOCATIONS PER ASME A17.1 ITEM 2.8.2.3.4
7. SPRINKLERS SHALL NOT INTERFERE WITH THE REGULATED CLEARANCES ON TOP OF THE ELEVATOR CAR OR THE MOVING EQUIPMENT WITHIN THE HOISTWAY
8. BOTTOM CAR CLEARANCE SHALL CONFORM WITH ASME A17.1 ITEM 5.2.1.4
9. CAR TOP CLEARANCE SHALL CONFORM WITH ASME A17.1 ITEM 5.2.1.4.3
10. PROVIDE CAR TOP ESCAPE HATCH
11. PROVIDE TWO-WAY, 24-HOUR VOICE COMMUNICATION SYSTEM
12. FIREFIGHTERS SERVICE SHALL NOT BE REQUIRED
13. PROVIDE HOISTWAY DOOR FLOOR NUMBERS PER ASME A17.1 ITEM 5.2.1.1



BEILHARZ ARCHITECTS INCORPORATED

PLOT SCALE
1/4"=1'-0"
FOR SHEET SIZE 24"x36"

ISSUE DATE
1 10-28-2011
PRELIMINARY
2 11-18-2011
CORRECTION LETTER

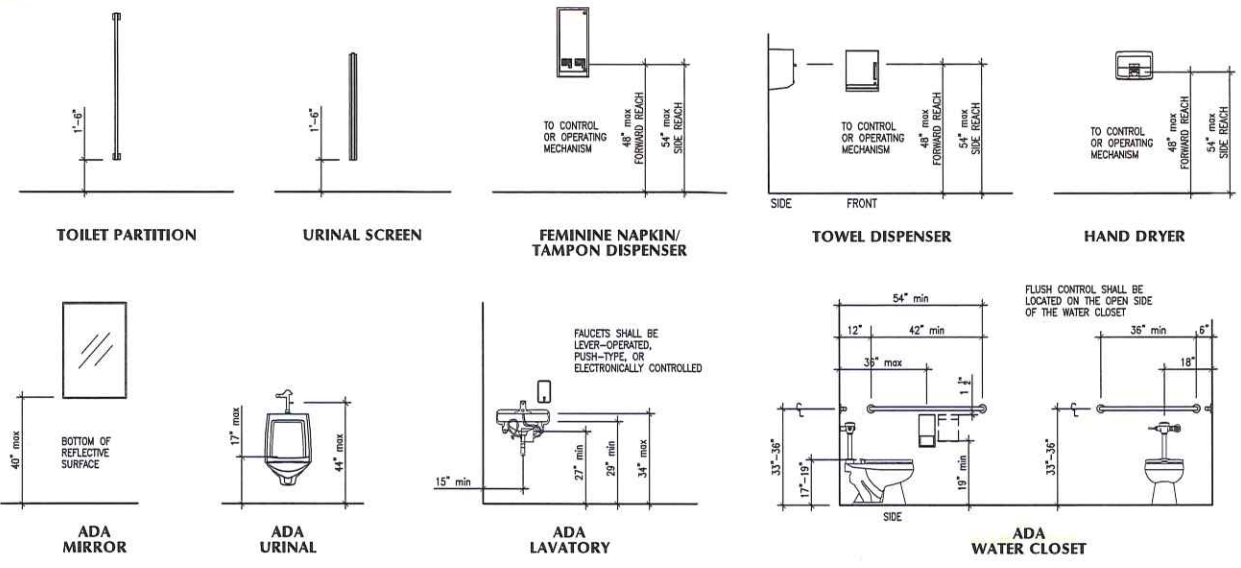
© 2011 BEILHARZ ARCHITECTS, INC. THE CONTENT OF THIS DRAWING IS NOT INTENDED TO BE SUITABLE FOR USE OR REUSE BY INDIVIDUALS, COMPANIES, CORPORATIONS, OR OTHER ENTITIES FOR ANY PURPOSE OTHER THAN THE INTENDED PURPOSE OF THIS DOCUMENT, NOR FOR USE ON ANY OTHER PROJECT. ANY REUSE OR REPRODUCTION WITHOUT WRITTEN VERIFICATION AND APPROVAL BY THE ARCHITECT FOR THE SPECIFIC PURPOSE INTENDED SHALL BE AT THE USER'S SOLE RISK AND WITHOUT LIABILITY OR LOSS, EXCEPTIVE TO THE ARCHITECT.

JULIE'S PORTRAIT CREATIONS
ELEVATOR ADDITION AND INTERIOR RENOVATIONS
127 EAST CLINTON STREET
NAPOLEON, OHIO 43545

ENLARGED PLANS

PROJECT: 81-4356
DRAWN BY: JM
CHECKED BY: JSO
SHEET

A-2



CASEWORK SCHEDULE						
MARK	DESCRIPTION	W	D	H	SHEET	DETAIL/NOTES
C1	BASE CABINET	12	24	34	1/A-5	A,B
C2	BASE CABINET	24	24	34	1/A-5	A,B
C3	BASE CABINET	30	24	34	1/A-5	A,B
C4	BASE CABINET	36	24	34	1/A-5	A,B
C5	BASE CABINET, BLIND CORNER	48	24	34	1/A-5	A,B
C6	BASE CABINET	30	24	36	1/A-5	A,B
C7	BASE CABINET	36	24	36	1/A-5	A,B
C8	WALL CABINET	30	12	15	1/A-5	A,B
C9	WALL CABINET	36	12	15	1/A-5	A,B
C10	WALL CABINET	48	12	15	1/A-5	A,B
C11	WALL CABINET	48	12	30	1/A-5	A,B
C12	WALL CABINET	30	12	30	1/A-5	A,B
C13	WALL CABINET	36	12	30	1/A-5	A,B
C14	WALL CABINET	12	12	30	1/A-5	A,B
C15	WALL CABINET, BLIND CORNER	24	12	30	1/A-5	A,B

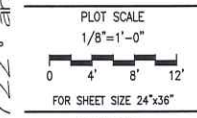
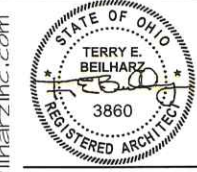
* Base cabinet height scheduled is nominal height of counter top A.F.F.

NOTES LEGEND
A Provide matching fillers where cabinets abut wall and where necessary
B Provide finish ends on all exposed cabinets

TOILET ROOM ACCESSORY SCHEDULE									
MARK	A1	A2	A3	A4	A5	A6	A7	A8	A9
Women O10	2	•	3	•	•	1	1	3	-
Men O12	2	•	•	•	•	1	1	1	2
ADA Toilet 109	1	•	1	•	•	1	1	-	-

NOTES LEGEND
A Surface mounted, provide solid blocking for attachment
B Surface mount to partition where applicable
C Overhead braced
D Secure with stainless steel angle
• By owner (N.I.C.) blocking by contractor

- KEYNOTE LEGEND**
- BASE AS SCHEDULED; RUN ACROSS ALL CABINET KICK SPACES
 - CEILING AS SCHEDULED
 - WALL FINISH AS SCHEDULED
 - ELECTRICAL DEVICE OR FIXTURE, SEE ELECTRICAL DRAWINGS
 - P. LAMINATE COUNTERTOP WITH 4" BACKSPASH, RETURN AT WALL END
 - PLASTIC LAMINATE FASCIA WITH WOOD BLOCK BACKUP
 - 3/4" REMOVABLE PLASTIC LAMINATE VANITY APRON WITH LIGHT GAUGE ANGLE SUPPORT
 - INSULATION KIT BY P.C.
 - COUNTERTOP SUPPORT BRACKET ON P. LAMINATE LEDGER
 - P. LAMINATE FILLER TO MATCH CABINETS, SCRIBE TO WALL; FINISH EXPOSED ENDS
 - P. LAMINATE UPPER CABINETS WITH PULLS AND SHELVES
 - P. LAMINATE BASE CABINETS WITH WIRE PULLS AND SHELVES
 - CONTINUOUS SEALANT
 - 3 COMPARTMENT SINK BY OWNER
 - WOOD CAP AND TRIM BOARD, MATCH EXISTING BALCONY HEIGHT AND PROFILE
 - 4x4 WOOD COLUMN IN NEW STUD WALL FOR BALCONY SUPPORT, ATTACH TO EXISTING BALCONY FRAMING AND FLOOR FRAMING AS NECESSARY
 - EXHAUST HOOD, SEE HVAC DRAWINGS
 - 22 GA. STAINLESS STEEL; 18" DOWN FROM HOOD; RETURN AT ENDS



ISSUE DATE

1	10-28-2011
PRELIMINARY	
2	11-18-2011
CORRECTION LETTER	

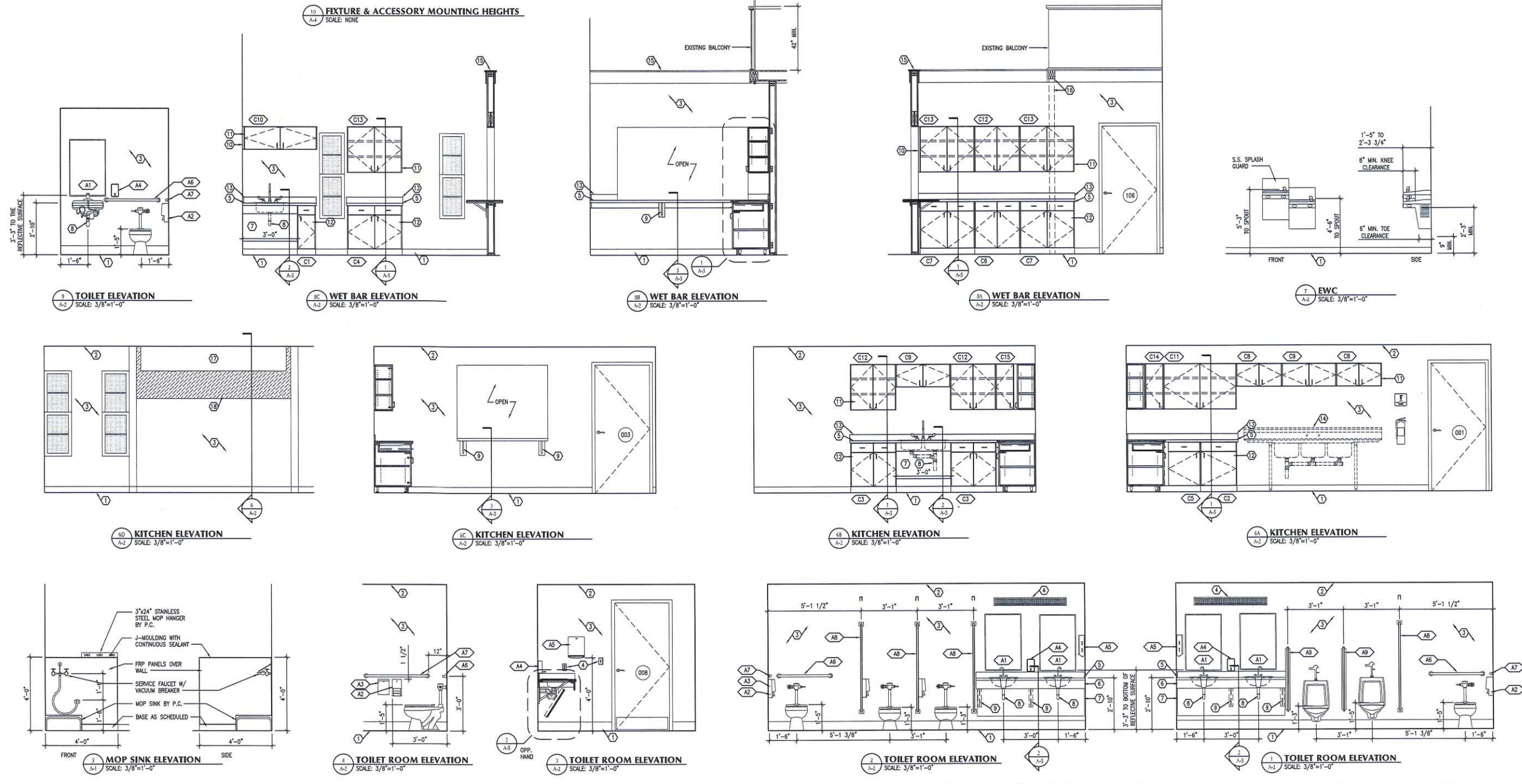
© 2011 BELHARZ ARCHITECTS, INC.
THE CONTENT OF THIS DRAWING IS NOT INTENDED TO BE SUITABLE FOR USE OR REUSE BY INDIVIDUALS, COMPANIES, ORGANIZATIONS OR OTHER ENTITIES FOR ANY PURPOSE OTHER THAN THE INTENDED PURPOSE OF THIS DOCUMENT, NOT FOR USE ON ANY OTHER PROJECT. ANY REUSE OR REPRODUCTION WITHOUT WRITTEN PERMISSION AND ADAPTATION BY THE ARCHITECT FOR THE SPECIFIC PURPOSE INTENDED SHALL BE AT THE USER'S SOLE RISK AND WITHOUT LIABILITY OR LEGAL EXPOSURE TO THE ARCHITECT.

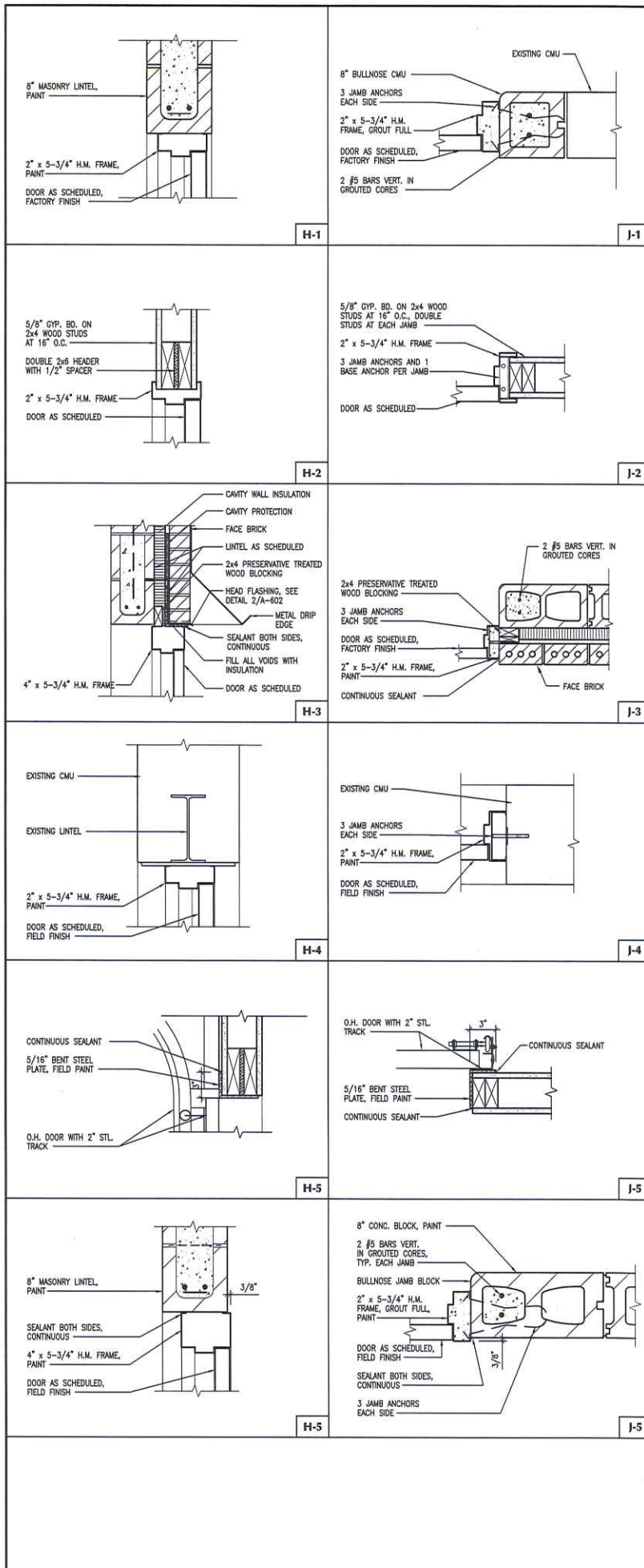
JULIE'S PORTRAIT CREATIONS
ELEVATOR ADDITION AND INTERIOR RENOVATIONS
127 EAST CLINTON STREET
NAPOLEON, OHIO 43545

INTERIOR ELEVATIONS
CASEWORK DETAILS

PROJECT: B1-4356
DRAWN BY: JM
CHECKED BY: JSO
SHEET

A-4





DOOR SCHEDULE

MARK	W		H	THK	MTL	ELEV	GLAZING		FRAME		MTL	DETAIL	HDW	NOTES
	TYPE	W					H	HEAD	JAMB	SET				
001	3'-0"	7'-0"	1'-3/4"	WD	A	-	-	-	HM	H-1	J-1	1		
002	3'-0"	7'-0"	1'-3/4"	WD	A	-	-	-	HM	H-1	J-1	1		
003	3'-0"	7'-0"	1'-3/4"	WD	A	A	8	33	HM	H-2	J-2	1		
004	3'-0"	7'-0"	1'-3/4"	WD	A	-	-	-	HM	H-2	J-2	5		
005	3'-0"	7'-0"	1'-3/4"	WD	A	-	-	-	HM	H-2	J-2	5		
006	3'-0"	7'-0"	1'-3/4"	HM	B	A	8	33	HM	L-1	J-1	2		
007	3'-0"	7'-0"	1'-3/4"	HM	B	-	-	-	HM	H-3	J-3	3	2,4	
008	3'-0"	7'-0"	1'-3/4"	WD	A	-	-	-	HM	H-1	J-1	4		
009	3'-0"	7'-0"	1'-3/4"	WD	A	-	-	-	HM	H-1	J-1	5		
010	3'-0"	7'-0"	1'-3/4"	WD	A	-	-	-	HM	H-5	J-5	7	4,5	
101	3'-0"	7'-0"	1'-3/4"	HM	B	A	8	33	HM	L-3	J-1	7		
102	3'-0"	7'-0"	1'-3/4"	HM	C	-	-	-	HM	H-4	J-4	3	2,3	
103	8'-0"	8'-0"	2"	STL	D	-	-	-	STL	H-5	J-5	-	1	
104	3'-0"	7'-0"	1'-3/4"	HM	A	-	-	-	HM	H-2	J-2	5		
105	3'-0"	7'-0"	1'-3/4"	HM	A	-	-	-	HM	H-2	J-2	6		
106	3'-0"	7'-0"	1'-3/4"	HM	A	A	8	33	HM	H-2	J-2	1		
107	3'-0"	7'-0"	1'-3/4"	HM	A	-	-	-	HM	H-4	J-4	6	3	
108	3'-0"	7'-0"	1'-3/4"	WD	A	-	-	-	HM	H-5	J-5	7	4,5	

MATERIAL LEGEND		NOTES	
HM	Hollow Metal, field paint	1	Hardware by door supplier
WD	Solid Core Wood	2	Insulated Core
STL	Steel	3	field verify dimensions
		4	4" Head
		5	coord. w/ elevator

GLAZING TYPE LEGEND	
A	1/4" Tempered glass

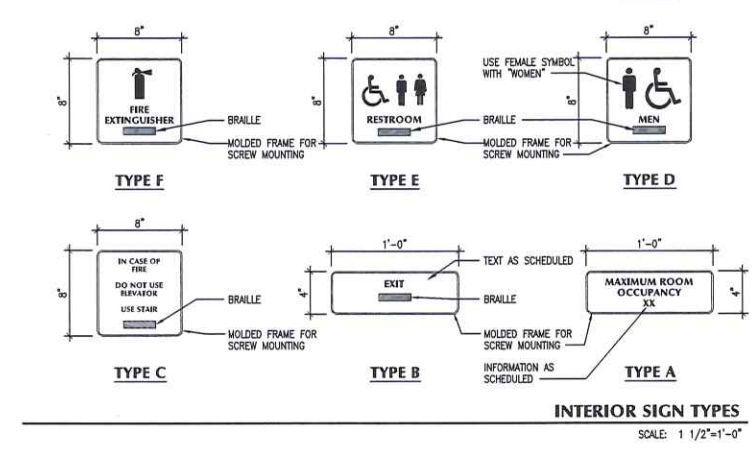
HARDWARE SET		
SET #1	SET #2	SET #3
Passage set, Lever Hinges Wall Stop	Exit Device Lever Trim Hinges Closer, ADA Compliant	Exit Device, locking type Lever trim w/ cylinder Hinges Closer, ADA Compliant
SET #4	SET #5	SET #6
Push plate Pull Closer, ADA compliant Wall Stop Kickplate	Privacy Set, Lever Hinges Wall Stop Closer, ADA Compliant Kickplate	Passage set, Lever Hinges Wall Stop Closer, ADA compliant
SET #7	SET #8	SET #9
Office lockset, Lever Hinges Wall Stop		

GENERAL DOOR, FRAME AND HARDWARE NOTES

- THE OPENING FORCE FOR INTERIOR SIDE-SWINGING DOORS WITHOUT CLOSERS SHALL NOT EXCEED A 5 POUND (22 N) FORCE. FOR OTHER SIDE-SWINGING, SLIDING AND FOLDING DOORS, THE DOOR LATCH SHALL RELEASE WHEN SUBJECTED TO A 15 POUND (67 N) FORCE. THE DOOR SHALL BE SET IN MOTION WHEN SUBJECTED TO A 30 POUND (133 N) FORCE. THE DOOR SHALL SWING TO A FULL-OPEN POSITION WHEN SUBJECTED TO A 15 POUND (67 N) FORCE. FORCES SHALL BE APPLIED TO THE LATCH SIDE.
- WHERE MEANS OF EGRESS DOORS ARE OPERATED WITH POWER ASSISTED MANUAL OPERATION, THE DESIGN SHALL BE SUCH THAT IN THE EVENT OF POWER FAILURE, THE DOOR IS CAPABLE OF BEING OPENED MANUALLY TO PERMIT MEANS OF EGRESS TRAVEL OR CLOSED WHERE NECESSARY TO SAFEGUARD MEANS OF EGRESS. THE FORCES REQUIRED TO OPEN THESE DOORS MANUALLY SHALL NOT EXCEED THOSE SPECIFIED IN ITEM NO. 1, EXCEPT THAT THE FORCE TO SET THE DOOR IN MOTION SHALL NOT EXCEED 50 POUNDS (220 N).
- CONTRACTOR SHALL FIELD VERIFY ALL OPENING DIMENSIONS.
- ALL FRAMES SHALL HAVE CONTINUOUS SEALANT, BOTH SIDES OF OPENING.
- PROVIDE 4" HEAD FRAMES WHERE NECESSARY TO MEET MASONRY COURSING.

GENERAL SIGNAGE NOTES

- ALL SIGN TEXT SHALL BE 5/8" HIGH, RAISED 1/32" U.N.O.
- BRILLE SHALL BE CONTRACTED (GRADE 2).
- BRILLE SHALL BE POSITIONED BELOW THE CORRESPONDING TEXT. IF TEXT IS MULTI-LINED, BRILLE SHALL BE PLACED BELOW THE ENTIRE TEXT. BRILLE SHALL BE SEPARATED 3/8" MIN. FROM ANY OTHER TACTILE CHARACTER AND 3/8" MIN. FROM RAISED BORDERS AND DECORATIVE ELEMENTS.
- INSTALL SIGN ON WALL ADJACENT TO LATCH SIDE OF DOOR, OR ON THE NEAREST ADJACENT WALL, WITH A MINIMUM CLEAR FLOOR SPACE OF 18" BY 18".
- LOCATE SIGNS 9" FROM LATCH EDGE OF DOOR TO CENTERLINE OF SIGN WHEN INSTALLED ADJACENT TO DOOR.
- TACTILE CHARACTERS ON SIGNS SHALL BE LOCATED 48" MIN. ABOVE THE FINISH FLOOR OR GROUND SURFACE, MEASURED FROM THE BASELINE OF THE LOWEST TACTILE CHARACTER AND 60" MAX. ABOVE THE FINISH FLOOR OR GROUND SURFACE, MEASURED FROM THE BASELINE OF THE HIGHEST TACTILE CHARACTER.

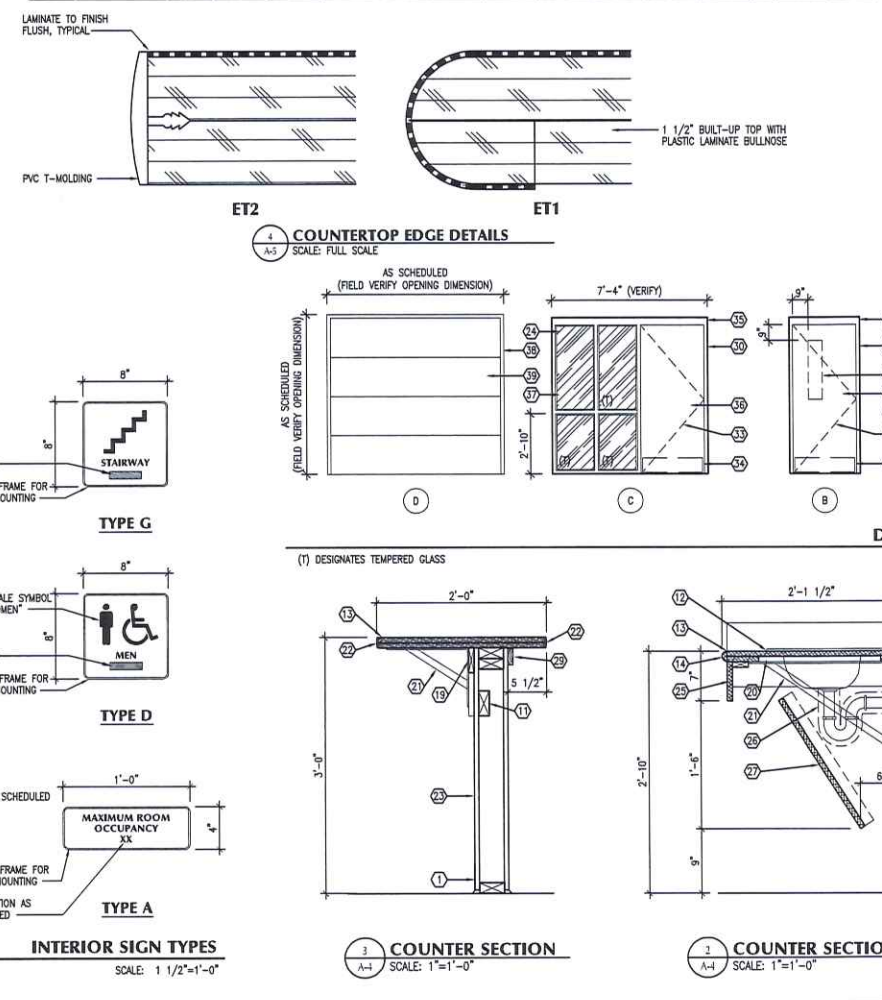


ROOM FINISH SCHEDULE

ROOM	FLOOR		BASE	WALLS		CEILING		NOTES				
	MATL	MATL		N	FIN	MATL	FIN					
001	Foyer	E	EX	EX	P1	EX	P1	E	P2	Varies		
002	Gallery	E	EX	EX	P1	EX	P1	E	P1	8'-0"		
003	Storage	E	EX	EX	P1	EX	P1	E	P1	8'-0"		
004	Hallway	E	RC4	G	P1	EX	P1	G	P1	8'-0"		
005	Lobby	E	RC4	G	P1	CMU	P1	CMU	P1	E	Varies	
006	Storage	E	RC4	G	P1	EX	P1	G	P1	E	8'-0"	
007	Conference	E	RC4	G	P1	G	P1	EX	P1	G	P2	8'-0"
008	Kitchen	E	RC4	G	FRP/P1	G	P1	EX	P1	G	P2	8'-0"
009	Mechanical	E	EX	EX	EX	EX	EX	EX	EX	EX	EX	-
009a	Storage	E	EX	EX	EX	EX	EX	EX	EX	EX	EX	-
010	Women	E	CT	EX	CT/P1	EX	P1	G	CT/P1	EX	P1	8'-0"
011	Alcove	E	EX	EX	P1	EX	P1	EX	P1	E	P2	-
012	Men	E	CT	EX	CT/P1	EX	P1	G	CT/P1	EX	P1	8'-0"
013	Alcove	E	EX	EX	P1	EX	P1	EX	P1	E	P2	-
014	Lobby	E	EX	EX	P1	EX	P1	EX	P1	E	P2	-
015	Janitor	E	EX	EX	P1	EX	P1	EX	P1	E	P2	8'-0"
016	Shower	CT	CT	G	P1	G	P1	G	P1	G	P2	8'-0"
017	Utility	WD	WD	EX	P1	EX	P1	EX	P1	G	P2	8'-0"
018	Vanity	CT	CT	G	P1	G	P1	G	P1	G	P2	8'-0"
019	Bedroom	WD	WD	EX	P1	EX	P1	EX	P1	G	P2	8'-0"
020	Kitchen	WD	WD	EX	P1	EX	P1	EX	P1	G	P2	8'-0"
021	Living Room	WD	WD	EX	P1	EX	P1	EX	P1	G	P2	8'-0"
101	Lobby	E	RC4	G	P1	CMU	P1	CMU	P1	E	-	Varies
102	Banquet Hall	WD	EX	EX	P1	EX	P1	EX	P1	E	P2	Varies
103	Storage	WD	RC4	EX	P1	G	P1	G	P1	E	P2	Varies
104	Office	WD	EX	EX	P1	EX	P1	EX	P1	E	P2	8'-0"
105	Toilet	WD	EX	EX	P1	EX	P1	EX	P1	E	P2	8'-0"
106	Alcove	WD	EX	EX	P1	EX	P1	EX	P1	E	P2	8'-0"
107	Alcove	WD	EX	EX	P1	EX	P1	EX	P1	E	P2	8'-0"
108	Changing Room	WD	WD	G	P1	G	P1	G	P1	G	P2	8'-0"
109	ADA Toilet	WD	WD	G	P1	G	P1	G	P1	G	P2	8'-0"
110	Wet Bar	WD	RC4	EX	P1	G	P1	G	P1	E	P2	8'-0"
201	Balcony	WD	RC4	EX	P1	EX	P1	EX	P1	-	-	-
202	Storage	WD	WD	EX	P1	EX	P1	EX	P1	E	P2	8'-0"
203	Office	WD	WD	EX	P1	EX	P1	EX	P1	E	P2	8'-0"
204	Alcove	WD	WD	EX	P1	EX	P1	EX	P1	E	P2	8'-0"
205	Office	WD	WD	EX	P1	EX	P1	EX	P1	E	P2	8'-0"
206	Alcove	WD	WD	EX	P1	EX	P1	EX	P1	E	P2	8'-0"
207	Alcove	WD	WD	EX	P1	EX	P1	EX	P1	E	P2	8'-0"
208	Office	WD	WD	EX	P1	EX	P1	EX	P1	E	P2	8'-0"
209	Toilet	WD	WD	EX	P1	EX	P1	EX	P1	E	P2	8'-0"

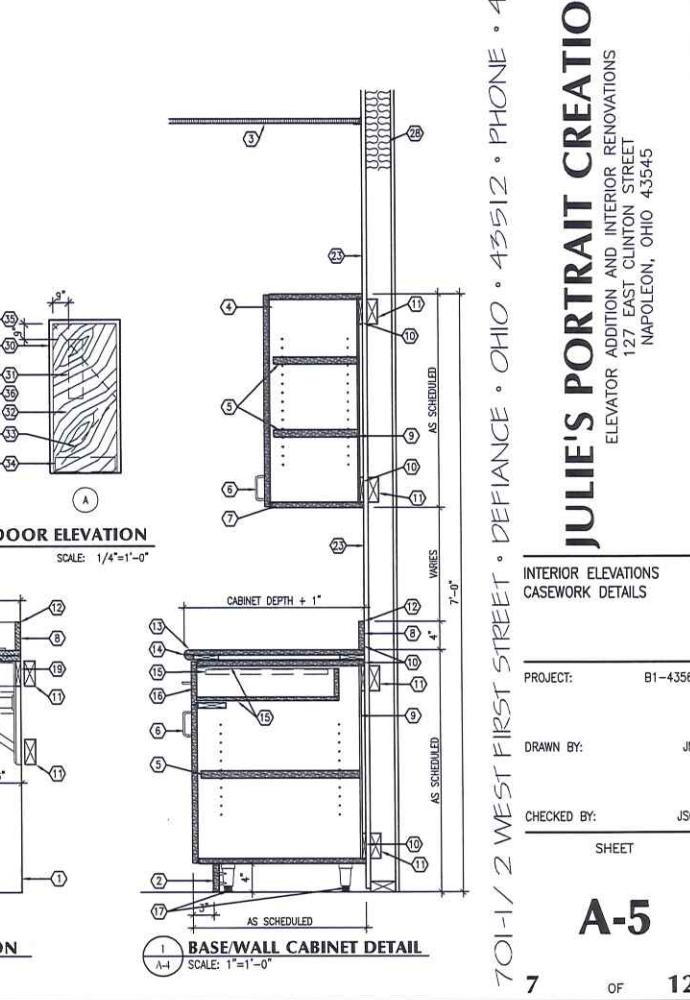
FLOOR MATERIAL LEGEND		WALL MATERIAL LEGEND		FINISH LEGEND		NOTES LEGEND	
E	Exposed concrete, sealed	G	Gypsum board	P1	Paint, Eggshell	1	Acoustical insulation in wall cavity
C	Carpet	CMU	Concrete masonry	P2	Paint, flat		
CT	Ceramic Tile	EX	Existing to Remain	FRP	Fiberglass Reinforced Polyester panels		
WD	Wood	CT	Ceramic Tile Wall, 48" AFF				

BASE MATERIAL LEGEND		CEILING MATERIAL LEGEND		GENERAL NOTES	
RC4	Rubber cove, 4"	G	Gypsum board	1	All finishes to be determined by Owner
RC6	Rubber cove, 6"	E	Exposed structure		
CT	Ceramic Tile Base, 6x6				
WD	Wood base				



KEYNOTE LEGEND

- BASE AS SCHEDULED
- BASE AS SCHEDULED OVER REMOVABLE 3/4" PARTICLE BOARD TOE KICK
- CEILING AS SCHEDULED
- PLASTIC LAMINATE OVER 3/4" PARTICLE BOARD
- 1" ADJUSTABLE MELAMINE SHELVES
- WIRE PULL
- PLASTIC LAM. BOTTOM PANEL AND EXPOSED SIDES
- 3/4"x4" PLASTIC LAMINATE BACKSPLASH, RETURN AT WALL END
- 1/4" MELAMINE REAR PANEL
- 3/4" PARTICLE BOARD FRAMING
- BLOCKING AS REQUIRED WITHIN WALL CAVITY
- CONTINUOUS SEALANT
- 1 1/2" BUILT-UP COUNTERTOP WITH PLASTIC LAMINATE OVER ALL EXPOSED SURFACES
- COUNTERTOP EDGE ET1, SEE DETAIL 4/A-5
- DRAWER GUIDES, HEAVY DUTY
- 3/4" PARTICLE BOARD DRAWER WITH WIRE PULL
- ADJUSTABLE LEGS, 4 EACH CABINET
- NOT USED
- 3/4" PLASTIC LAMINATE LEDGER
- 3/4" PARTICLEBOARD SPACER AT SUPPORTS
- COUNTERTOP SUPPORT BRACKET ON P. LAMINATE LEDGER
- COUNTERTOP EDGE ET2, SEE DETAIL 4/A-5
- 5/8" OYP. BOARD OVER WOOD STUDS AT 16" O.C.
- 1" INSULATED GLASS
- PLASTIC LAMINATE FASCIA WITH WOOD BLOCK BACKUP
- P.C. TO INSULATE TRAP, DRAIN AND HOT WATER SUPPLY
- 3/4" REMOVABLE PLASTIC LAMINATE VANITY APRON WITH LIGHT GAUGE ANGLE SUPPORT
- BATT INSULATION FOR FIRE BLOCKING
- 3/4"x1 1/2" P. LAMINATE TRIM; COVER ALL EXPOSED EDGES
- HOLLOW METAL FRAME; FIELD PAINT.
- DOOR GLASS KIT AS SCHEDULED; FIELD FINISH FRAME.
- SOLID CORE WOOD DOOR; FIELD FINISH.
- SWING OF DOOR; REFER TO PLANS.
- KICKPLATE AS SPECIFIED; 2" LDW
- 4" HEAD WHERE NECESSARY DUE TO MASONRY COURSING; FIELD VERIFY
- HOLLOW METAL DOOR; FIELD PAINT
- HOLLOW METAL BORROW LIGHT; FIELD PAINT FRAME.
- TRACK BY DOOR SUPPLIER.
- OVERHEAD DOOR, FIELD PAINT.



701-1/2 WEST FIRST STREET • DEFIANCE • OHIO • 43512 • PHONE • 419-782-6211 • FAX • 419-782-8722 • architects@beilharzinc.com

B | A
BEILHARZ
ARCHITECTS
INCORPORATED

PLOT SCALE
1/8"=1'-0"
FOR SHEET SIZE 24"x36"

ISSUE DATE
1 10-26-2011
PRELIMINARY
2 11-18-2011
CORRECTION LETTER

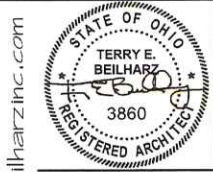
© 2011 BEILHARZ ARCHITECTS, INC.
THE CONTENT OF THIS DRAWING IS NOT INTENDED TO BE SUITABLE FOR USE OR RELIANCE BY INDIVIDUALS, COMPANIES, CORPORATIONS, OR OTHER ENTITIES FOR ANY PURPOSE OTHER THAN THE SPECIFIC PURPOSES OF THIS DOCUMENT. FOR REPRODUCTION WITHOUT WRITTEN VERIFICATION AND APPROVAL BY THE ARCHITECT FOR THE USER'S SOLE RISK AND WITHOUT LIABILITY OR LEGAL EXPOSURE TO THE ARCHITECT.

JULIE'S PORTRAIT CREATIONS
ELEVATOR ADDITION AND INTERIOR RENOVATIONS
127 EAST CLUNTON STREET
NAPOLEON, OHIO 43545

INTERIOR ELEVATIONS
CASEWORK DETAILS

PROJECT: B1-4356
DRAWN BY: JM
CHECKED BY: JSO
SHEET

A-5



PLOT SCALE
1/4" = 1'-0"
0 2' 4' 6'

FOR SHEET SIZE 24"x36"

ISSUE DATE
1. 10-26-2011
PRELIMINARY
2. 11-18-2011
CORRECTION LETTER

© 2011 BEILHARZ ARCHITECTS, INC.
THE CONTENT OF THIS DRAWING IS NOT INTENDED TO BE SUITABLE FOR USE OR REUSE BY INDIVIDUALS, COMPANIES, CORPORATIONS, OR OTHER ENTITIES FOR ANY PURPOSE OTHER THAN THE INTENDED PURPOSE OF THIS DOCUMENT. NO USE ON ANY OTHER PROJECT, ANY REUSE OR REPRODUCTION WITHOUT WRITTEN PERMISSION AND ADAPTATION BY THE ARCHITECT FOR THE SPECIFIC PURPOSE INTENDED SHALL BE AT THE USER'S SOLE RISK AND WITHOUT LIABILITY OR LEGAL EXPOSURE TO THE ARCHITECT.

JULIE'S PORTRAIT CREATIONS
ELEVATOR ADDITION AND INTERIOR RENOVATIONS
127 EAST CLINTON STREET
NAPOLEON, OHIO 43545

FOUNDATION PLAN
FRAMING PLAN
DETAILS

PROJECT: B1-4356
DRAWN BY: KEP
CHECKED BY: JSO
SHEET

S-1

GENERAL FOUNDATION NOTES

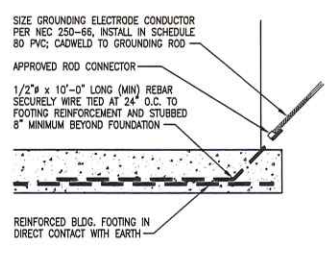
- ALL AREAS INDICATED TO BE SLOPED SHALL HAVE 1/8" PER FOOT MINIMUM FALL TO FLOOR DRAINS AS REQUIRED FOR POSITIVE DRAINAGE
- CONSTRUCTION JOINTS (DRY JOINTS) SHALL BE AS INDICATED ON THE DRAWINGS OR AS DIRECTED BY THE ARCHITECT
- TOP OF WALL ELEVATIONS 0'-0" UNLESS NOTED OTHERWISE
- BOTTOM OF FOOTING ELEVATIONS MUST BE EXTENDED TO UNDISTURBED SOIL
- ALL FOUNDATION WALLS TO BE REINFORCED CONCRETE UNLESS NOTED OTHERWISE.
- REROUTE EXISTING PERFORATED STORM PIPE AS NECESSARY WHEN ENCOUNTERED
- AT LOCATIONS WHERE SOILS ARE FOUND THAT ARE UNSUITABLE FOR STRUCTURAL BEARING, SOIL IS TO BE REMOVED, AND TRENCH BACKFILLED PER DETAIL 10/S-1.

GENERAL FRAMING NOTES

- HORIZONTAL STEEL JOIST BRIDGING SHALL BE INSTALLED AS SHOWN ON THE FRAMING PLANS, TOP AND BOTTOM CHORD, CONTINUOUS AND SECURED TO MASONRY WALL W/BEARING ANCHORS. BRIDGING SIZE SHALL BE IN ACCORDANCE WITH SJI STANDARDS.
- VERIFY ALL EQUIPMENT OPENING SIZES WITH HVAC CONTRACTOR.
- AT EACH K-SERIES STEEL JOIST MASONRY BEARING, PROVIDE A 4"x8"x3/8" STEEL BEARING PLATE W/2" NELSON STUD ANCHORS GROUTED IN BLOCK CORES. (U.N.O.)
- THE ENDS OF STEEL JOISTS SHALL EXTEND OVER STEEL BEARING PLATES, BEAMS, AND GIRDERS, AS SPECIFIED BY THE STEEL JOIST INSTITUTE, AND SHALL HAVE POSITIVE ATTACHMENT THERETO WITH TWO 1" LONG WELDS, OR EQUAL BOLTED CONNECTION.
- ALL WALLS SHOWN ON FRAMING PLAN SHALL EXTEND TO BOTTOM OF ROOF DECK UNLESS SPECIFICALLY NOTED.
- IN ADDITION TO ALL SCHEDULED STEEL MEMBERS, THE STRUCTURAL STEEL SUPPLIER SHALL FURNISH TWO L3.5x3.5x5/16" STEEL ANGLES IN 10' LENGTHS TO BE USED AS NEEDED FOR MISCELLANEOUS OPENINGS.
- UNLESS NOTED OTHERWISE, ALL DECK SHALL BE 1 1/2" TYPE WR, 20 GAUGE.

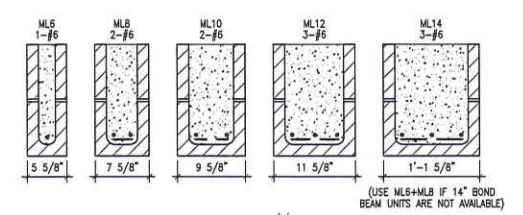
KEYNOTE LEGEND

- CONCRETE AIR SLAB
- 4" CONC. SLAB WITH 6"x6" W/1.4W1.4 W/F OVER W/POR RETARDER AND 4" MIN. COMPACTED GRANULAR FILL. FINISH FLOOR EQUAL TO 0'-0" UNLESS NOTED OTHERWISE.
- PROVIDE FOOTING REBAR GROUNDING; SEE DETAIL 12/S-1, VERIFY LOCATION WITH E.C.
- REMOVE EXISTING MASONRY BELOW FINISH FLOOR AT NEW OPENING TO A MINIMUM OF -0'-4". POUR NEW SLAB INTO DOOR OPENING, FLUSH WITH EXISTING SLAB.
- HOLD FOUNDATION DOWN 8" AT OPENING.
- L3.5x5/16" x 6" LONG BRIDGING ANCHOR (BAC) AT MASONRY WALL, INSTALL WITH EXPANSION BOLTS, FIELD WELD TO HORIZONTAL (H.B.) AND DIAGONAL (D.B.) BRIDGING.
- L4x4x1/4" CONTINUOUS BENT PLATE, WITH 7/16" HOLES AT 32" O.C., WITH 3/8"x2" STAINLESS STEEL HEX BOLT, NUT AND FLAT WASHER FOR WOOD FASCIA ATTACHMENT, SEE ARCHITECTURAL DETAILS.
- INSTALL 4 #5 PINS (12" LONG) AT CONNECTION TO EXISTING FOUNDATION. DRILL PINS INTO EXISTING FOUNDATION A MINIMUM OF 6", SET IN EPOXY



FOOTING REBAR GROUNDING

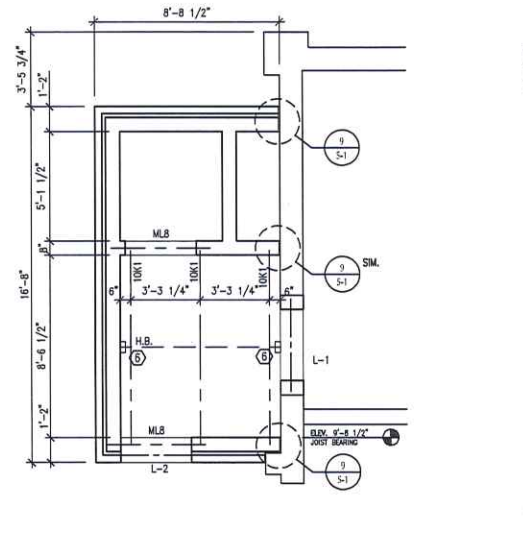
GROUNDING DETAILS
SCALE: NONE



MASONRY LINTEL SCHEDULE
SCALE: 1'-1'-0"

MASONRY LINTEL NOTES

- GROUT ALL MASONRY UNITS SOLID
- ALL REINFORCING BARS SHALL BE HOOKED AT THE ENDS
- LINTELS SHALL BEAR ON SOLID CMU OR BEAR ON 2 FILLED CORES, U.N.O.
- BOND PATTERN OF LINTEL SHALL MATCH ADJACENT WALL
- BOTTOM OF LINTEL SHALL BE SOLID MASONRY (LINTEL BLOCK REQUIRED). SEE SHEET A-401 FOR ADDITIONAL WORK.

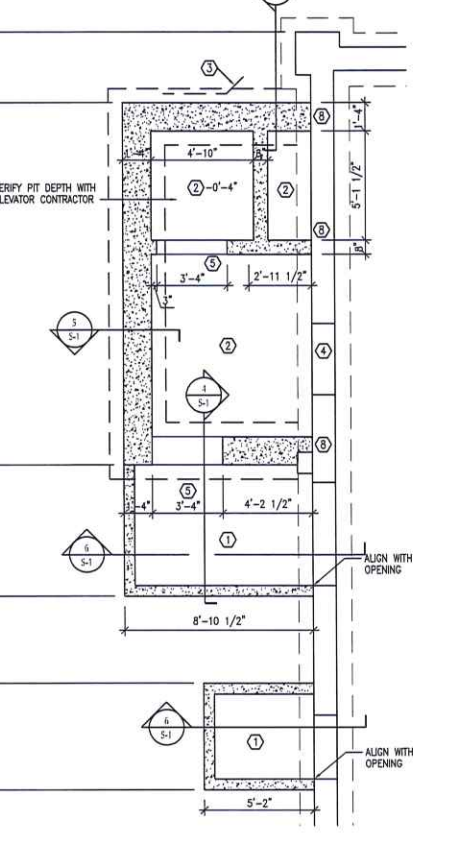


ROOF FRAMING PLAN
SCALE: 1/4"=1'-0"

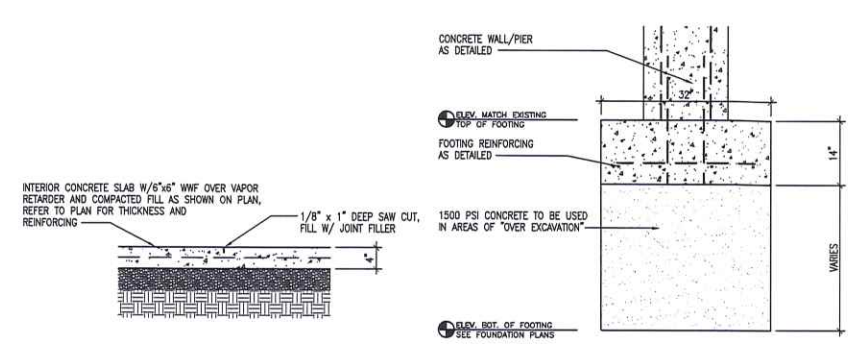
FLOOR FRAMING PLAN
SCALE: 1/4"=1'-0"

MARK	SIZE	PLATE		Masonry	END	NOTES
		SIZE	Wall Thk.			
L-1	(3)L4.0x3.5x5/16"	13"	6" MAS	3'-4"	6" MAS	1
L-2	L4.0x3.5x5/16"	-	4"	6" MAS	3'-4"	6" MAS
L-3	(3)L3.0x3.5x5/16"	-	10"	6" MAS	3'-4"	6" MAS

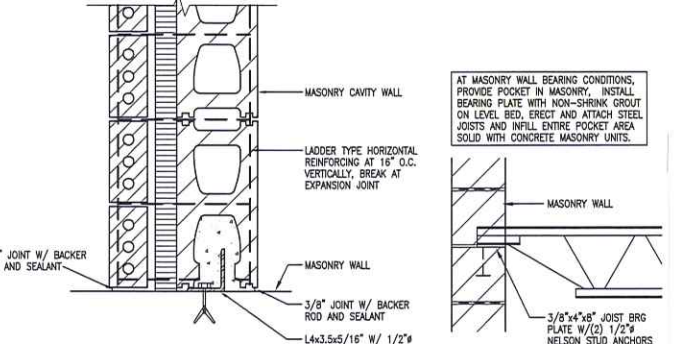
NOTES LEGEND
1 Verify existing wall thickness and condition



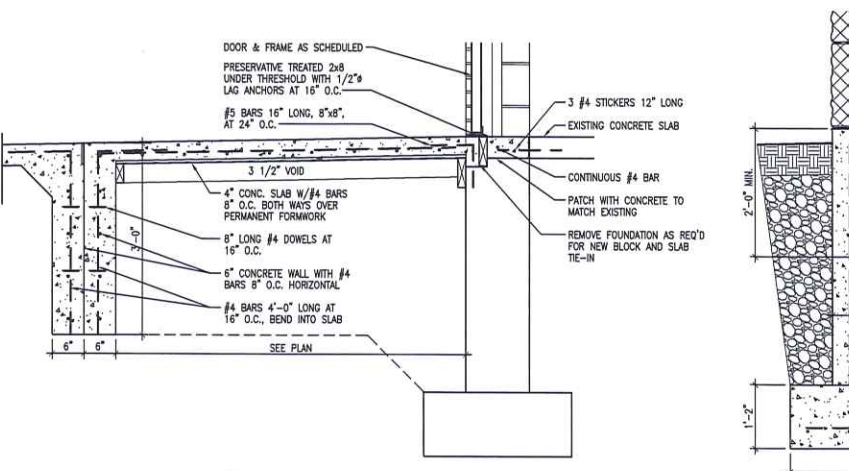
FOUNDATION PLAN
SCALE: 1/4"=1'-0"



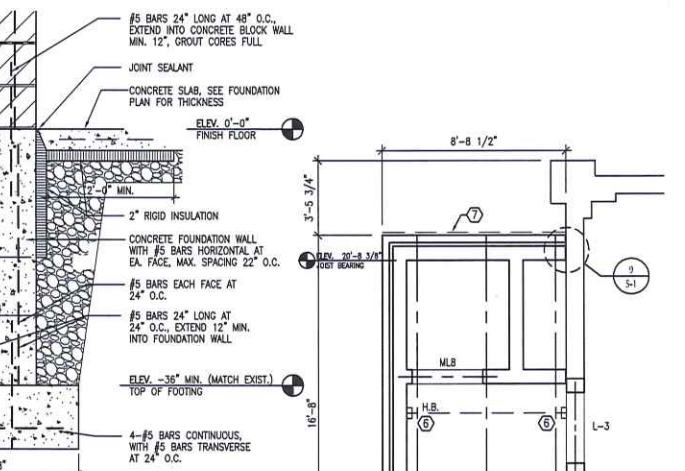
FOUNDATION DETAIL AT AIR SLAB
SCALE: 3/4"=1'-0"



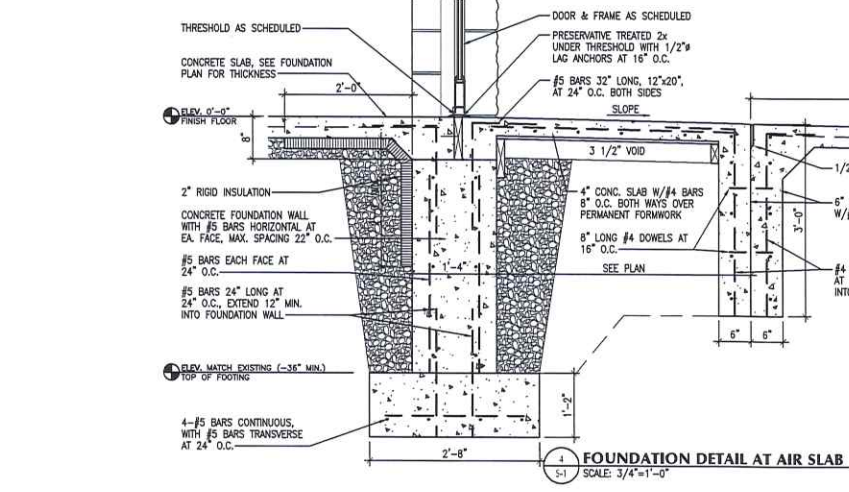
BONDING ANGLE DETAIL
SCALE: 5'-1



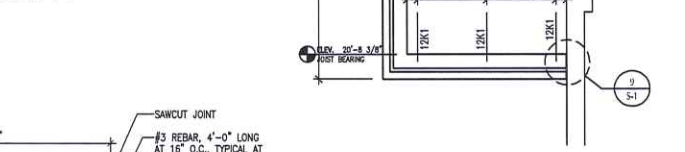
AIR SLAB DETAIL AT EXISTING WALL
SCALE: 3/4"=1'-0"



FOUNDATION DETAIL
SCALE: 3/4"=1'-0"



FOUNDATION DETAIL AT AIR SLAB
SCALE: 3/4"=1'-0"



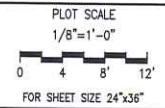
ROOF FRAMING PLAN
SCALE: 1/4"=1'-0"



FLOOR FRAMING PLAN
SCALE: 1/4"=1'-0"



BEILHARZ
ARCHITECTS
INCORPORATED



ISSUE DATE:
1 10-28-2011
PRELIMINARY
2 11-18-2011
CORRECTION LETTER

© 2011 BEILHARZ ARCHITECTS, INC.
THE CONTENT OF THIS DRAWING IS NOT INTENDED TO BE SUITABLE FOR USE OR REUSE BY NON-OWNERS, COMPANIES, CORPORATIONS, OR OTHER ENTITIES FOR ANY PURPOSE OTHER THAN THE INTENDED PURPOSE OF THIS DOCUMENT. FOR USE ON ANY OTHER PROJECT, ANY REUSE OR REPRODUCTION WITHOUT WRITTEN PERMISSION AND ADAPTATION BY THE ARCHITECT FOR THE SPECIFIC PURPOSE INTENDED SHALL BE AT THE USER'S SOLE RISK AND WITHOUT LIABILITY OR LEGAL EXPOSURE TO THE ARCHITECT.

JULIE'S PORTRAIT CREATIONS
ELEVATOR ADDITION AND INTERIOR RENOVATIONS
127 EAST CLINTON STREET
NAPOLEON, OHIO 43545

PLUMBING PLANS
PLUMBING DETAILS
PLUMBING ISOMETRIC

PROJECT: B1-4356

DRAWN BY: JM

CHECKED BY: JSO

SHEET

P-1

PLUMBING FIXTURE SCHEDULE								
MARK	DESCRIPTION	MOUNTING	CONNECTIONS			NOTES		
			CW	HW	DRAIN	WASTE	VENT	
WC1	Water Closet, Accessible	Floor	1	-	4	4	2	A, B, C
WC2	Water Closet, Std. Ht.	Floor	1	-	4	4	2	A, B, C
WC3	Water Closet, Std. Ht.	Floor	3/8	-	4	4	2	A, B
UR1	Urinal, Accessible	Wall	3/4	-	2	2	1 1/2	A, B
UR2	Urinal, Std. Ht.	Wall	3/4	-	2	2	1 1/2	A, B
LAV1	Lavatory, Accessible	Counter	1/2	1/2	1-1/2	2	1-1/4	A, B, D, E, F
LAV2	Lavatory, Accessible	Counter	1/2	1/2	1-1/2	2	1-1/4	A, B, D, E, F
LAV3	Lavatory	Counter	1/2	1/2	1-1/2	2	1-1/4	A, B, D, E, F
DF1	Elec. Water Cooler, Dual Height	Wall	3/8	-	1-1/2	2	1-1/4	A, B, H
MOP	Mop Basin	Floor	1/2	1/2	1-1/2	3	3	A
FD1	Floor Drain	Floor	-	-	3	3	B	G
SK1	Single bowl sink	Counter	1/2	1/2	1-1/2	2	1-1/4	A, B, D, E
SK2	Double bowl sink	Counter	1/2	1/2	1-1/2	2	1-1/4	A, B, D, E
SK3	3 Compartment sink	Floor	1/2	1/2	1-1/2	2	1-1/4	A, B, D, E
SHO1	Shower	Wall	1/2	1/2	2	3	-	B, E
TUB	Shower	Floor	1/2	1/2	2	3	-	B, E

NOTES LEGEND
A Refer to Arch. Drawings for mounting location
B Refer to isometric for venting; Detail 5-P-1
C Flush valve
D Install insulation kit (trap and supplies)
E Provide thermostatic tempering valve for hot water line
F Fixture carrier
G Refer to detail 2/P-1
H Stainless steel backsplash

PLUMBING FIXTURES (OR APPROVED EQUALS, VERIFY ALL FIXTURES WITH OWNER):

- WC1 - AMERICAN STANDARD 2305.100 MADERA WATER CLOSET WITH ZURN Z6000AV-WS1-YO FLUSH VALVE AND CHURCH 9500C SOLID PLASTIC SEAT.
- WC2 - AMERICAN STANDARD 2234.015 MADERA WATER CLOSET WITH ZURN Z6000AV-WS1-YO FLUSH VALVE AND CHURCH 9500C SOLID PLASTIC SEAT.
- WC3 - FIXTURE BY OWNER (RESIDENTIAL GRADE)
- LAV1 - AMERICAN STANDARD 0476.028 AQUALYN WITH AMERICAN STANDARD 7385.003 RELIANT FAUCET
- LAV2 - AMERICAN STANDARD 0124.131 COMRADE WITH AMERICAN STANDARD 7385.003 RELIANT FAUCET
- LAV3 - FIXTURE BY OWNER (RESIDENTIAL GRADE)
- UR1 - AMERICAN STANDARD 6501.010 WASHBROOK URINAL WITH ZURN Z6003AV-WS1 FLUSH VALVE, MOUNT AT 17" TO TOP OF RIM
- UR2 - AMERICAN STANDARD 6501.010 WASHBROOK URINAL WITH ZURN Z6003AV-WS1 FLUSH VALVE, MOUNT AT 22" TO TOP OF RIM
- DF1 - ELKAY EZSL80C WALL MOUNTED ELEC. WATER COOLER W/ WALL MOUNTED CARRIER
- MOP - FIAT MSB-2424 MOP BASIN WITH FIAT 830-AA FAUCET, HOSE, HOSE CLAMP, MOP HANGER AND SEALANT
- FD1 - ZURN ZN-415 FLOOR DRAIN
- SK1 - ELKAY LR40-Z219 SINGLE COMPARTMENT SINK WITH ELKAY LK0C-2432-BH FAUCET
- SK2 - FIXTURE BY OWNER (RESIDENTIAL GRADE)
- SK3 - EXISTING FIXTURE SUPPLIED BY OWNER, VERIFY CONDITIONS
- SHO1 - FIXTURE BY OWNER (RESIDENTIAL GRADE)
- TUB - FIXTURE BY OWNER (RESIDENTIAL GRADE)
- WCO - ZURN ZN-1443 WALL CLEAN OUT, SEE DETAIL 3/P-1
- FDC - ZURN ZN-1400 FLOOR CLEAN OUT, SEE DETAIL 1/P-1
- GR1 - ZURN Z1170 GREASE INTERCEPTOR, CAPACITY OF 100 LBS. GREASE RETENTION AND 50 GPM FLOW THROUGH RATING

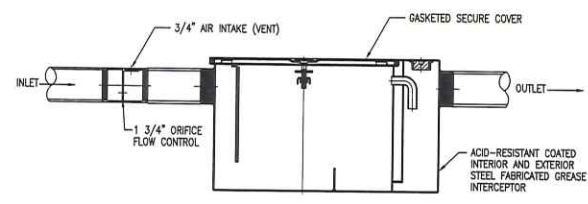
- GENERAL PLUMBING NOTES**
- CONCRETE SLAB CUTTING AND PATCHING BY G.C.; LAYOUT, TRENCHING, BACKFILL AND TESTING BY P.C., COORDINATE WORK WITH E.C.
 - FIELD VERIFY EXACT LOCATIONS OF ALL MATERIALS AND COORDINATE WORK WITH GENERAL CONTRACTOR AND ALL OTHER TRADES PRIOR TO FABRICATING OR INSTALLING ANY WORK
 - CONCRETE SLAB AND MASONRY WALL CORES SHALL BE COMPLETED BY THE G.C.; COORDINATION, LAYOUT, SLEEVING, PATCHING, ESCUTCHEONS, ETC. SHALL BE COMPLETED BY THE P.C.
 - ALL REQUIRED ROOF PENETRATIONS ASSOCIATED WITH THIS PORTION OF THE WORK SHALL BE PROVIDED AND FLASHED UNDER THE PLUMBING CONTRACTOR'S SCOPE OF WORK.
 - PROVIDE SHUT-OFF VALVES IN ALL COLD WATER AND HOT WATER FIXTURE SUPPLY LINES. LOCATE IN AN EASILY ACCESSIBLE AREA.
 - INSULATE HOT WATER LINE AND TRAP AT LAV W/ EXPOSED PIPING.
 - SEE ARCHITECTURAL DRAWINGS FOR FIXTURE MOUNTING HEIGHTS AND LOCATIONS
 - PROVIDE ALL PLUMBING IN ACCORDANCE WITH OHIO PLUMBING CODE (OPC)
 - COORDINATE ALL PLUMBING WORK AND FIXTURES WITH OWNER
 - GREASE INTERCEPTOR SHALL BE EQUIPPED WITH DEVICES TO CONTROL THE RATE OF WATER FLOW SO THAT THE WATER FLOW DOES NOT EXCEED THE RATED FLOW. THE FLOW CONTROL DEVICE SHALL BE VENTED AND TERMINATE NOT LESS THAN 6" ABOVE THE FLOOR RIM LEVEL OR BE INSTALLED IN ACCORDANCE WITH THE MANUFACTURER'S SPECIFICATIONS
 - FLUSH CONTROLS SHALL BE LOCATED ON THE OPEN SIDE OF THE WATER CLOSET AND IN COMPLIANCE WITH ADAAG

LEGEND

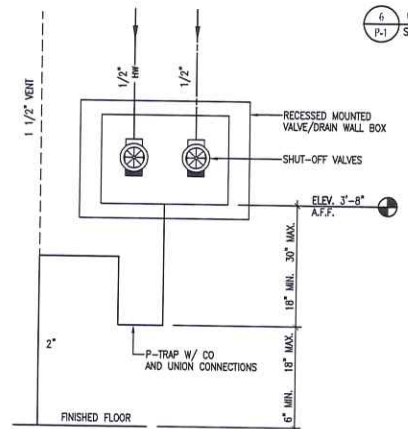
NEW UNDER SLAB SANITARY	---
NEW COLD WATER	— CW —
NEW HOT WATER	— HW —
NEW VENT LINE	— V —
EXISTING COLD WATER	--- XCW ---
EXISTING HOT WATER	--- XHW ---
EXISTING UNDER SLAB SANITARY	--- XSA ---
WALL CLEANOUT, SEE DETAIL 3/P-1	WCO
VENT THRU ROOF	VTR
SHUT OFF VALVE	⊠

KEYNOTE LEGEND

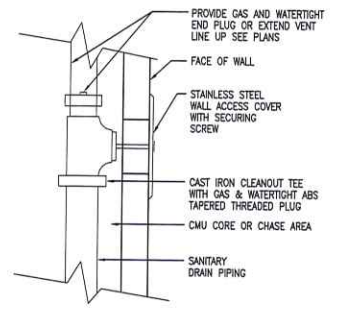
- PROVIDE ALL PLUMBING, FITTINGS AND MODIFICATIONS NECESSARY TO TIE NEW SANITARY INTO EXISTING 4" SANITARY, FIELD VERIFY EXACT LOCATION AND CONDITIONS
- PROVIDE ALL PLUMBING, FITTINGS AND MODIFICATIONS NECESSARY TO TIE NEW VENT INTO EXISTING RISER, FIELD VERIFY EXACT SIZE AND LOCATION AND CONDITIONS
- PROVIDE ALL PLUMBING, FITTINGS AND MODIFICATIONS NECESSARY TO TIE NEW WATER LINES INTO EXISTING HW AND CW LINES; FIELD VERIFY CONDITIONS.
- EXTEND NEW HW AND CW LINES TO FIXTURES FROM EXISTING WATER HEATER, REFER TO SCHEDULE FOR SIZES
- NEW 4" STACK VENT THRU ROOF
- WASHING MACHINE VALVE/DRAIN BOX, SEE DETAIL 4/P-1
- COMBINATION DRAIN/VENT CONNECTION.
- EXISTING FIXTURES TO REMAIN, REWORK PLUMBING NECESSARY TO TIE INTO NEW VENT STACK DRAWINGS
- FIRE PROTECTION SERVICE RISER BY FIRE PROTECTION CONTRACTOR, SEE FIRE PROTECTION DRAWINGS
- F.D. SIAMESE CONNECTION BY F.P.C.
- ABOVE GRADE GREASE INTERCEPTOR, PROVIDE BASE SUPPORT FOR PROPER INVERT ELEVATION AND FLOW. INSTALL IN STRICT ACCORDANCE WITH MANUFACTURER'S INSTRUCTIONS; REFER TO 5/P-1



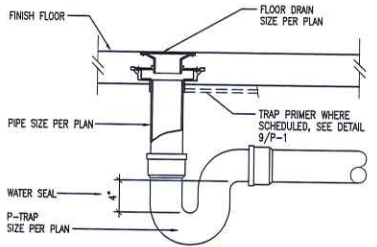
6 GREASE INTERCEPTOR DETAIL (GR1)
SCALE: NONE



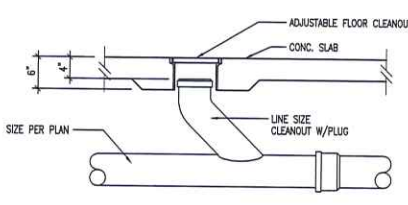
4 WASH MACHINE VALVE/DRAIN BOX
SCALE: NONE



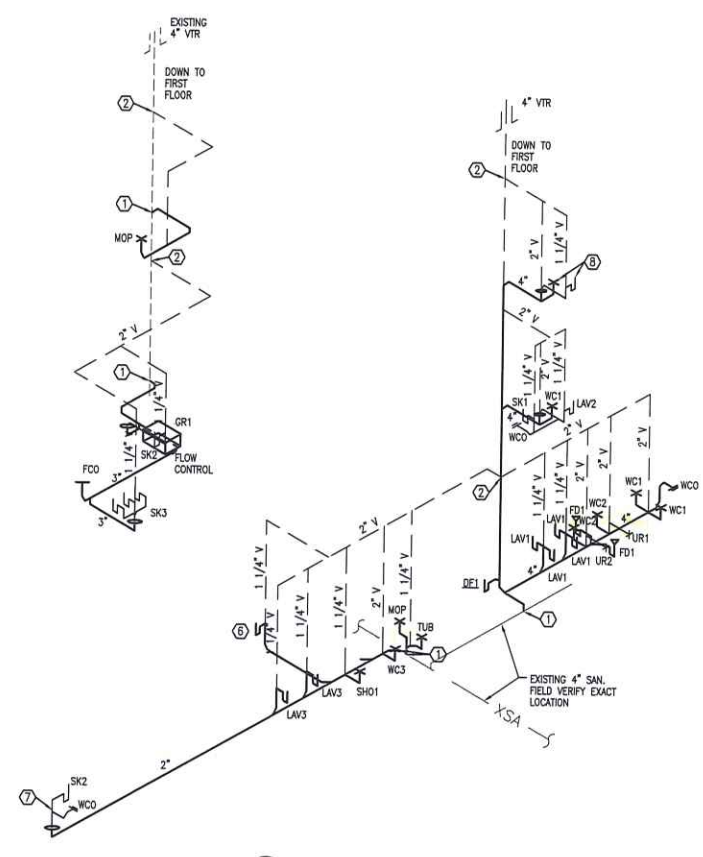
3 WALL CLEANOUT DETAIL (WCO)
SCALE: NONE



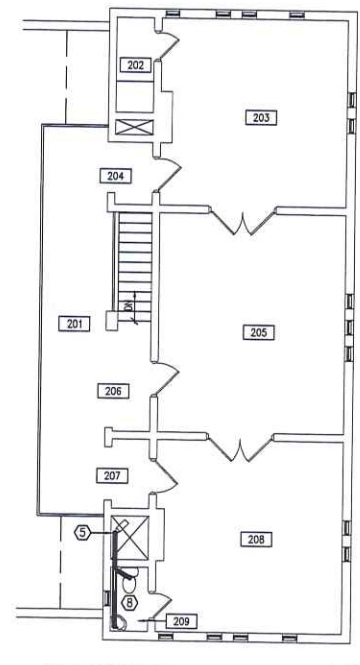
2 FLOOR DRAIN DETAIL (FD1)
SCALE: NONE



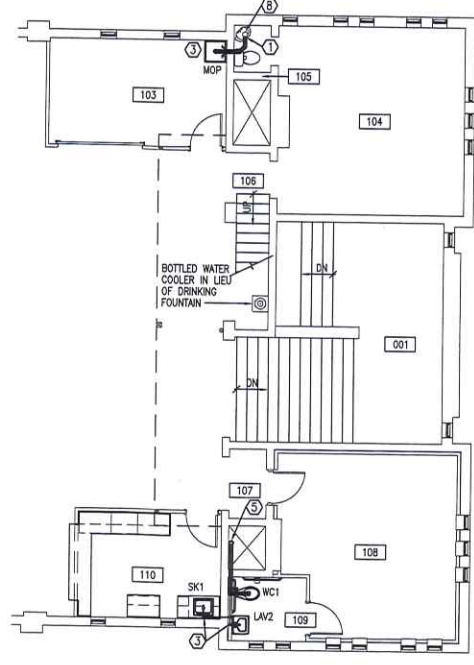
1 FLOOR CLEANOUT DETAIL (FCO)
SCALE: NONE



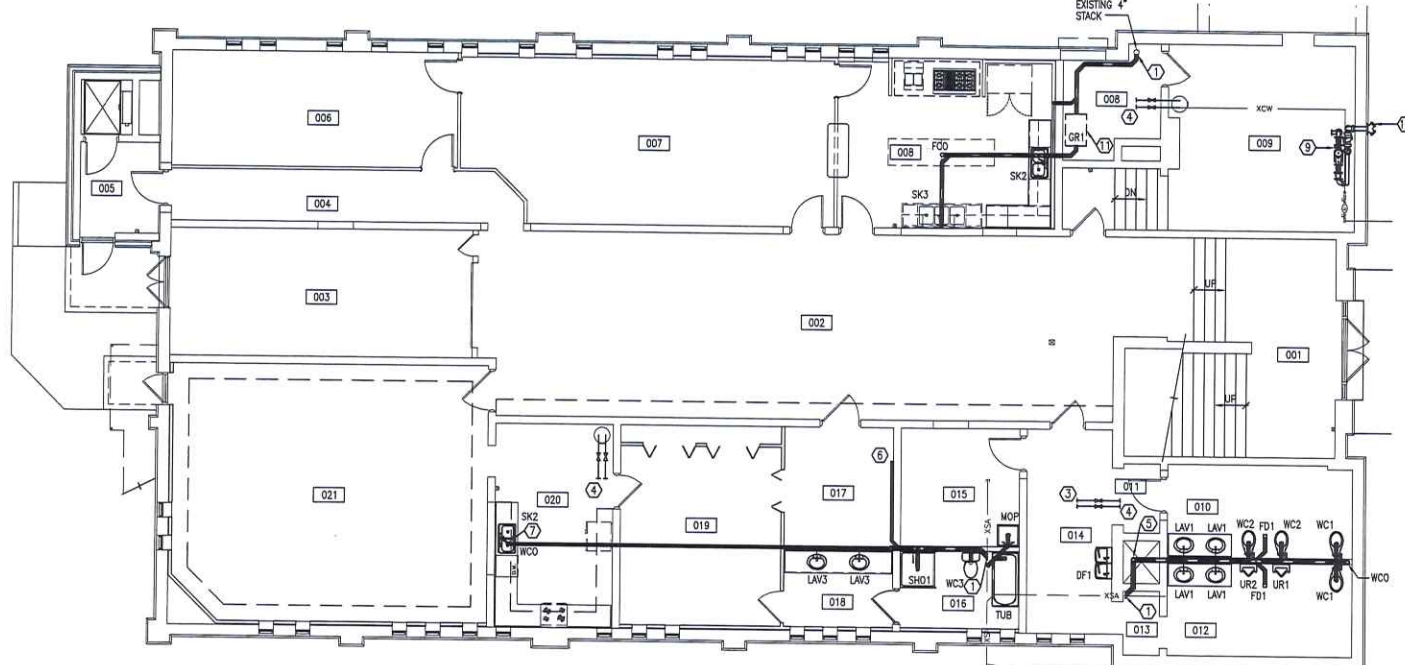
5 PLUMBING ISOMETRIC
SCALE: NONE



MEZZANINE PLUMBING PLAN
SCALE: 1/8"=1'-0"

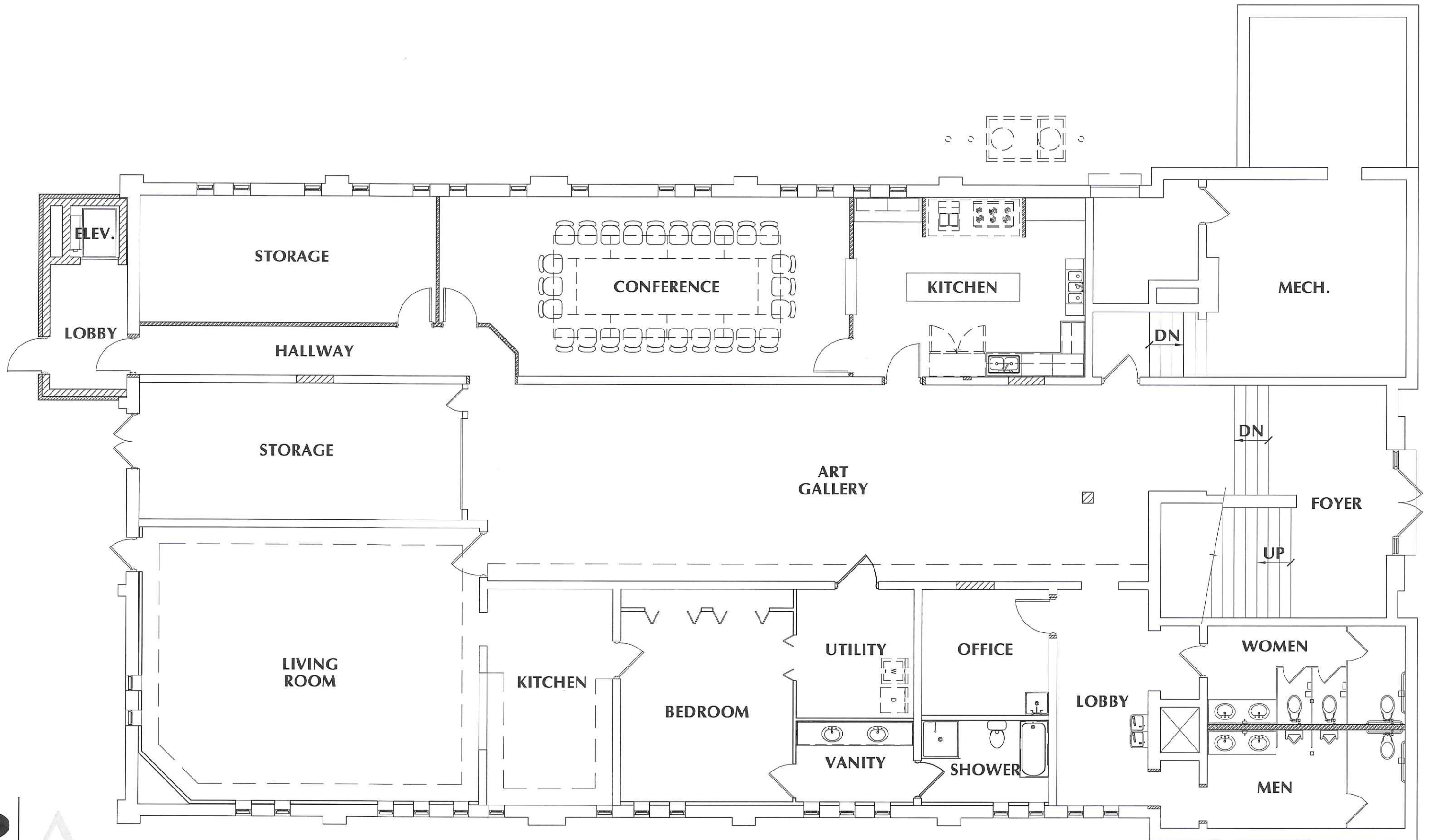


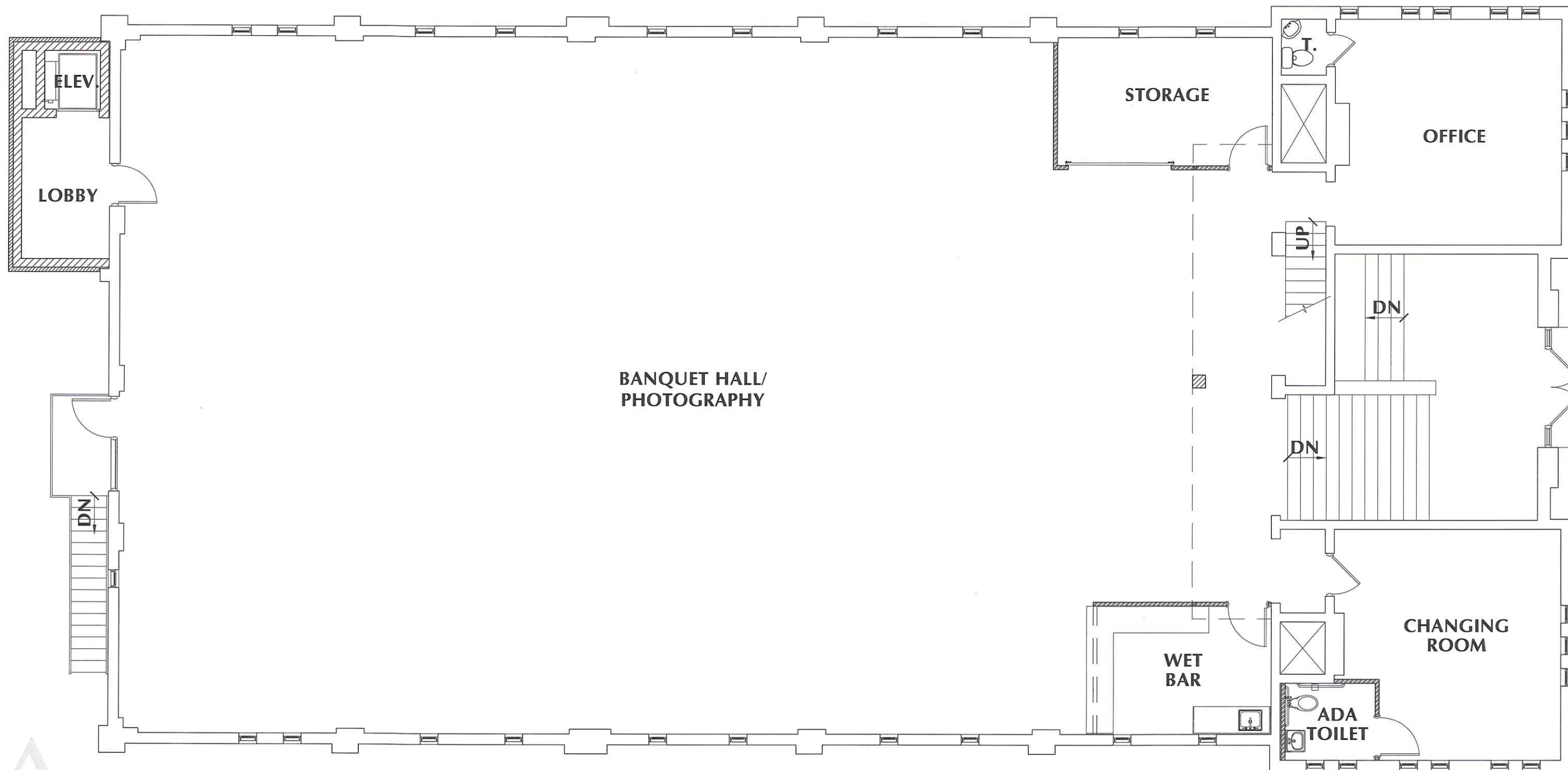
SECOND FLOOR PLUMBING
SCALE: 1/8"=1'-0"

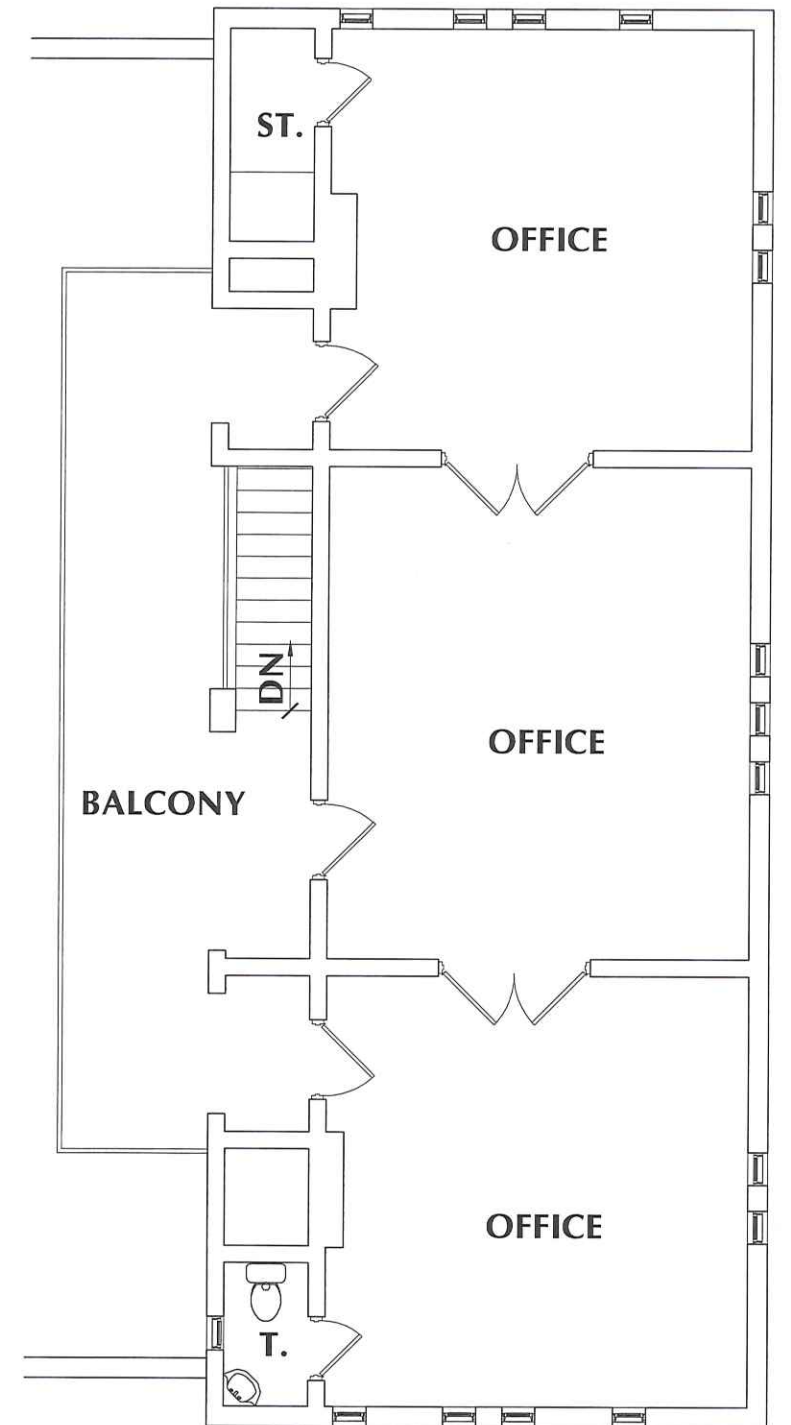


FIRST FLOOR PLUMBING
SCALE: 1/8"=1'-0"

701-1/2 WEST FIRST STREET • DEFIANCE • OHIO • 43512 • PHONE • 419-782-6211 • FAX • 419-782-8722 • architects@beilharzinc.com







PLAT OF SURVEY

A parcel of land being known as Lot 100 of the Original Plat of the Village (now City) of Napoleon, Henry County, Ohio. Containing 0.317 Ac., more or less.
127 East Clinton Street

FOR:

Julie's Portrait Creations, LLC
& Beilharz Architects, Inc.

DEED REFERENCE

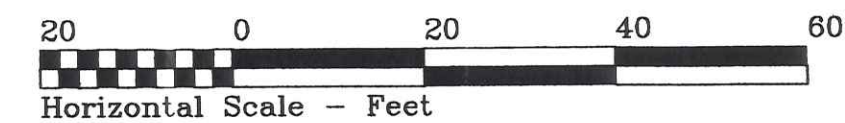
OR. V. 259, P. 2043

ZONING INFORMATION

THIS PROPERTY IS LOCATED IN THE "C-1" GENERAL COMMERCIAL ZONING DISTRICT

NOTES:

There are NO front, side or rear yard setback requirements for Commercial Uses in this district.



SURVEYOR'S CERTIFICATE

I hereby certify that this plat represents a survey made by me, and that the specified monuments shown actually exist, and their location is correctly shown.

10-13-11
Dated

Paul J. Westhoven
Paul J. Westhoven, P.S.
Ohio Registered Surveyor #5602

Survey Number: 8520-H-CN-10-13-11
The bearings are assumed for the purpose of indicating angular measurements only and are not referenced to True or Magnetic North.

LEGEND

- A • = Iron pin found
- B • = Point re-established



SITE BENCH MARK
TOP/STM. Manhole
ELEVATION = 680.39

DRAWN BY R.D.S. ~ dba: NEW DIMENSIONS

SCANNED 11/21/11 11/07/18 210

127 E. Clinton Street

